

Installation Guide

Apparo Fast Edit

For Windows Server

IBM Cognos Analytics

Version 3.3.0.0

Single Instance



1	<i>Prior to Installation</i>	4
1.1	Hardware requirements	4
1.2	Supported operating systems	4
1.3	Supported IBM Cognos Analytics versions	4
1.4	Supported web servers	4
1.5	Supported Java VM	4
1.6	Supported security systems.....	4
1.7	Supported virtual environments.....	4
1.8	Architecture.....	6
1.9	Overview installation steps	7
2	<i>Preparation</i>	8
2.1	Creation of a database user for the Apparo repository	9
3	<i>Installation</i>	10
3.1	License agreement	12
3.2	Selecting the architecture	12
3.3	Defining the start menu folder and target file directory	13
3.4	Carrying out the installation	14
3.5	Installation finish	14
4	<i>Configuration the Apparo application server</i>	15
4.1	Architecture.....	19
4.2	Application Server	19
4.3	IBM Cognos Analytics.....	20
4.4	File system paths	21
4.4.1	File path to batch/executable files	21
4.4.2	File path to client definitions	21
4.4.3	File path to custom java classes	21
4.4.4	Oracle Client path to tnsnames.ora	21
4.4.5	Java Keystore path and name	22
4.4.6	Java Keystore password	22
4.5	Web security system	23
4.6	eMail security system	24
4.7	Repository	25
4.8	License key	26
5	<i>Creating the Apparo Designer entry in IBM Cognos portal</i>	27
6	<i>Configuration of the Apparo gateway</i>	31
6.1	Configuration of the Microsoft Internet Information Server (IIS) 7 and higher.....	32
6.1.1	Make configuration of IIS using script	36
6.1.2	Make configuration of IIS manually	37
6.2	Configuration of the Apache 2.4 Webserver.....	53

7	<i>Installation clients</i>	56
8	<i>Configuration Manager using command line</i>	59
9	<i>Import/Export definitions using command line</i>	60
9.1	Exporting definitions.....	60
9.2	Importing definitions	61
10	<i>Browser requirements</i>	62
11	<i>TLS/SSL in a Cognos environment</i>	63
12	<i>Support</i>	64

1 Prior to Installation

Installing Apparo Fast Edit can be done in 30 minutes if you prepare your environment.

Please be aware of the following points before starting installation:

1.1 Hardware requirements

- File system about 1 GB
- Main Memory about 2 GB

1.2 Supported operating systems

- Windows Server 2008-2022 (64 bit only)

1.3 Supported IBM Cognos Analytics versions

- All versions of IBM Cognos Analytics 11 (with Cognos Gateway architecture only)

1.4 Supported web servers

- MS Internet Information Server (IIS) version 7.0 and higher
- Apache 2.4
- IBM Webserver (IHS)

1.5 Supported Java VM

- OpenJDK 11 (already part of the installation)

1.6 Supported security systems

- All security systems that are currently in use for IBM Cognos Analytics

1.7 Supported virtual environments

- VMware ESX, ESXi
- AWS/Azure VM

Apparo Fast Edit must be installed using a **local Windows administrator** account.

The Cognos Analytics Firewall (CAF) is supported too. It is possible to use standard settings or adding host name/domains into the list of valid domains.

IBM Cognos Analytics must be already installed and running.

The IBM Cognos Analytics Gateway must be already installed.

You can find an installation movie on youtube using:

<http://inst-cognosanalytics.apparo.solutions>

1.8 Architecture

Possible Apparo architectures:

<p>1</p>	<p>Single instance, your existing Cognos environment is installed on <u>one computer only – that’s suitable for testing too.</u></p> <p>A „Single Instance“ is useful for small IBM Cognos Analytics environments or test systems.</p> <p>Using “Single Instance” the complete Apparo Fast Edit installation and the complete IBM Cognos installation is installed on one single server.</p>
<p>2</p>	<p>Multi instance, one or more Apparo gateways and one or more Apparo application servers are installed on one or more hosts.</p> <p>A „Multi instance“ is useful for better performance and high availability.</p> <p>If you want to use the multi instance architecture then please close this document and open the document “installation cluster”</p>

You can find an Apparo Fast Edit architecture document in the setup file too.

1.9 Overview installation steps

<p>1</p>	<p>Preparation</p> <ul style="list-style-type: none"> • Creation of a database user for the Apparo repository • Defining the Cognos portal folder for the Apparo Designer entry
<p>2</p>	<p>Installation</p> <p>Starting setup file for installation of the files</p>
<p>3</p>	<p>Configuration the Apparo application server</p> <p>Using Apparo Configuration Manager to configure the installation</p>
<p>4</p>	<p>Creating the Apparo Designer entry in Cognos portal</p> <p>Creating the start entry of Apparo Designer</p>
<p>5</p>	<p>Configuration the Apparo gateway</p> <p>Configuration of the IIS web server</p>
<p>6</p>	<p>Installing clients</p>

2 Preparation

1	<p>Preparation Creation of a database user for the Apparo repository</p>
2	<p>Installation Starting setup file for installation of the files</p>
3	<p>Configuration the Apparo application server Using Apparo Configuration Manager to configure the installation</p>
4	<p>Creating the Apparo Designer entry in Cognos portal Creating the start entry of Apparo Designer</p>
5	<p>Configuration the Apparo gateway Configuration of the IIS web server</p>
6	<p>Installing clients</p>

2.1 Creation of a database user for the Apparo repository

Apparo Fast Edit requires a database repository. In this repository all of your definitions are stored.

Following databases are supported:

- Oracle
- IBM DB/2 LUW
- MS SQL Server
- Internal database (for test and development systems)

If you don't want to use the internal database then this database user must be defined before starting the Apparo Fast Edit setup.

You can find a detail description in the document "Installation – creating database repository".

Essential grants:

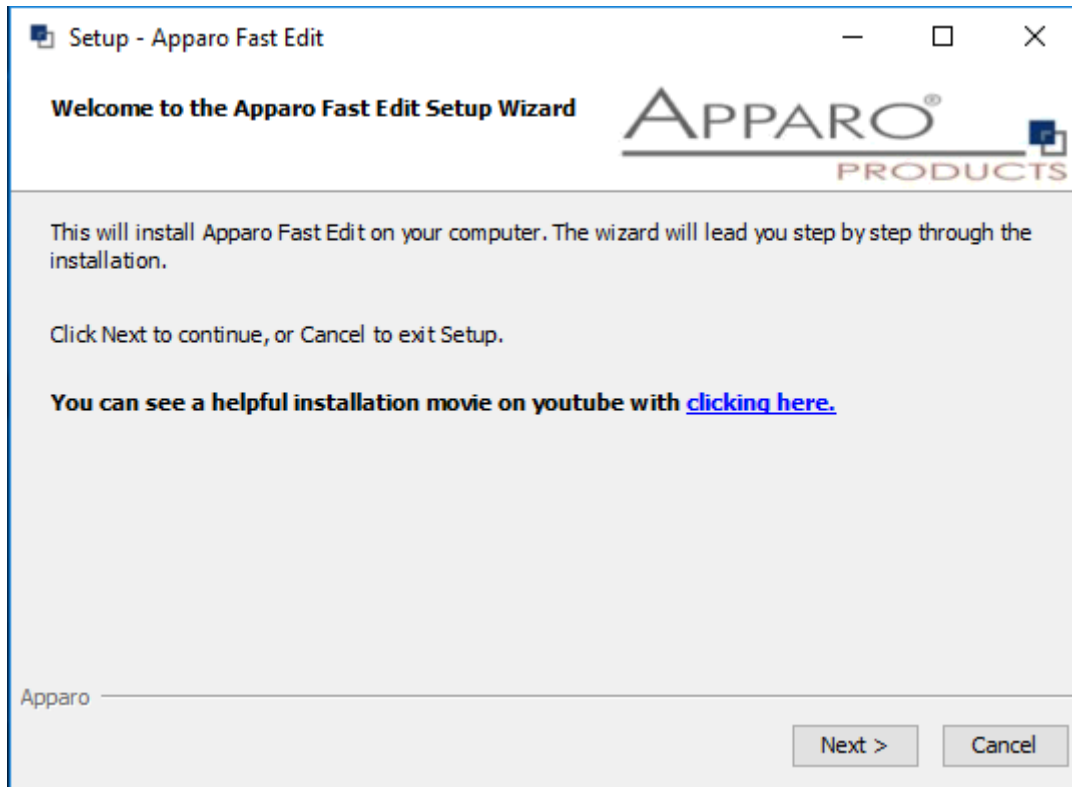
- The database user must be able to create database tables
- A Login with this user must be possible

3 Installation

1	<p>Preparation Creation of a database user for the Apparo repository</p>
2	<p>Installation Starting setup file for installation of the files</p>
3	<p>Configuration the Apparo application server Using Apparo Configuration Manager to configure the installation</p>
4	<p>Creating the Apparo Designer entry in Cognos portal Creating the start entry of Apparo Designer</p>
5	<p>Configuration the Apparo gateway Configuration of the IIS web server</p>
6	<p>Installing clients</p>

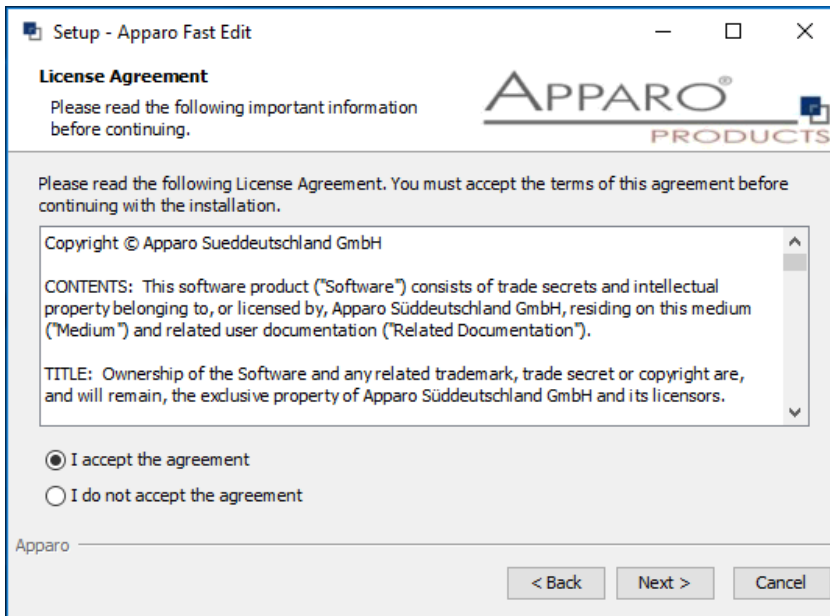
Start the Installation by executing the file

FastEdit3.3.0.y.zzz_windows_tomcat_cognos_analytics.exe



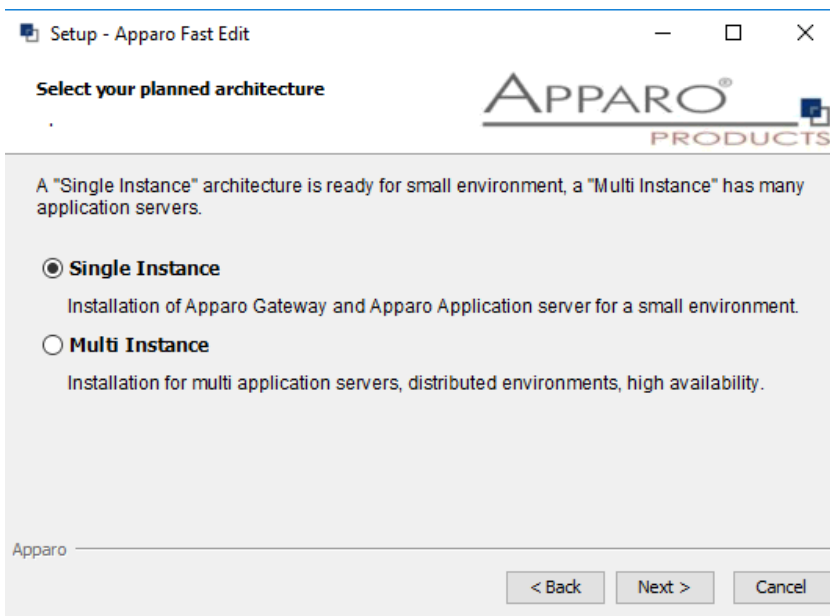
Confirm the beginning of the installation by clicking „Next“.

3.1 License agreement



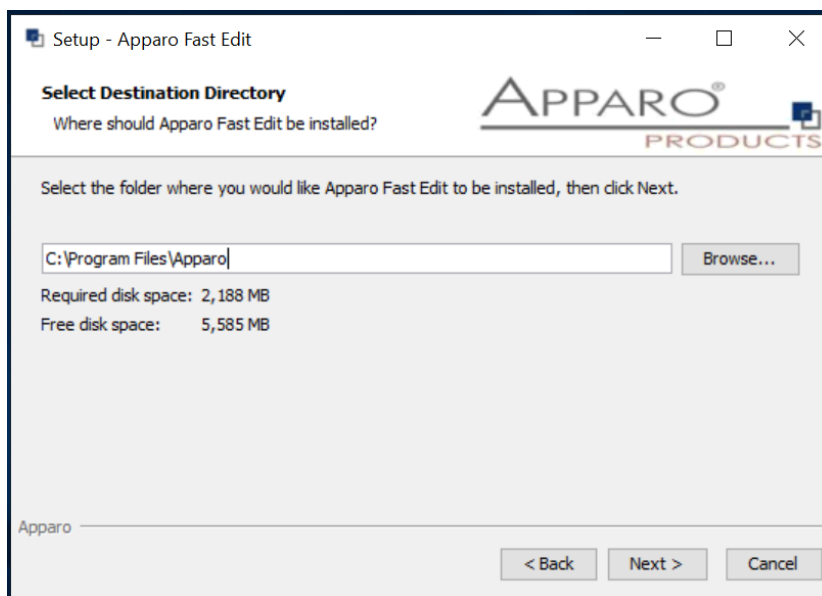
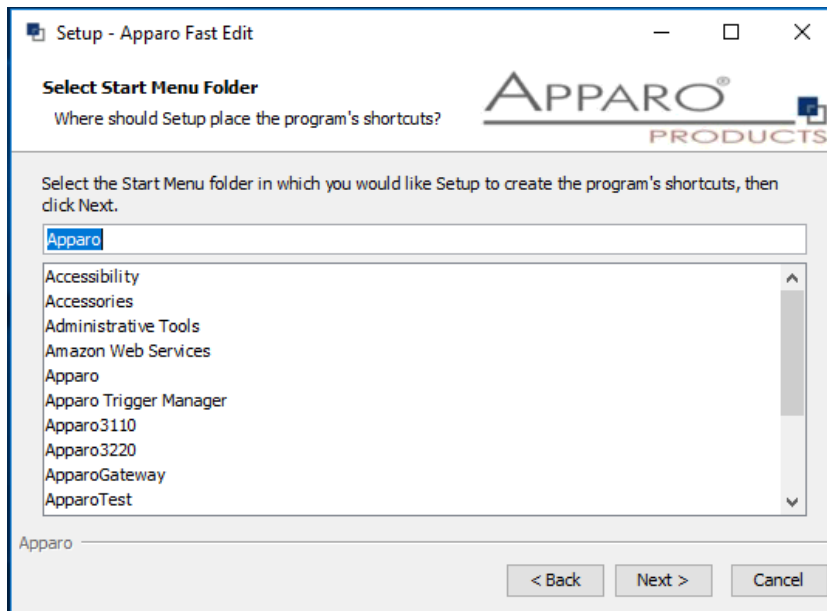
Read and confirm the license agreement by clicking „I Agree“.

3.2 Selecting the architecture



Please select “Single Instance” and choose „Next>“.

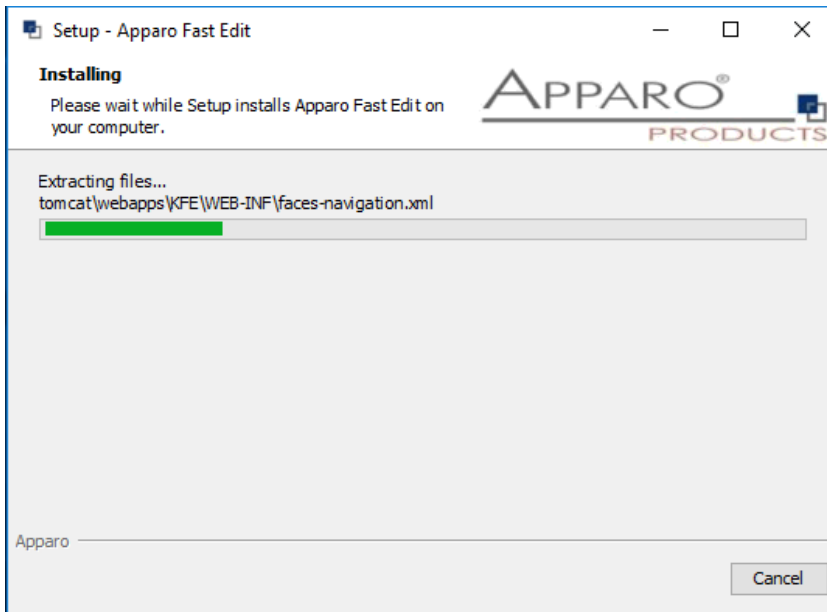
3.3 Defining the start menu folder and target file directory



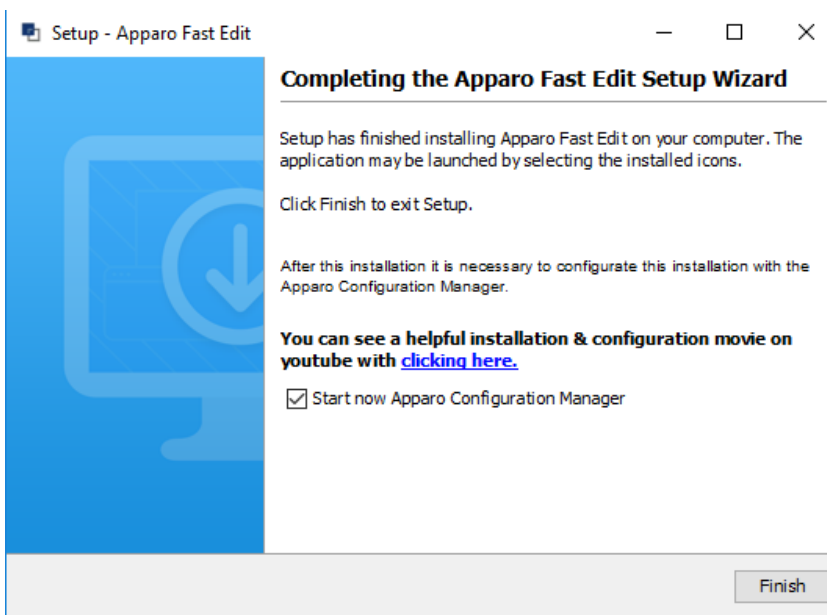
Please define folder and path and choose „**Next >**“.

3.4 Carrying out the installation

Finally the installation of Apparo Fast Edit with the selected architecture will start. After that this installation must be configured with the **Apparo Configuration Manager**.



3.5 Installation finish



Now it's time to **configure** the installation with the **Apparo Configuration Manager**.

Click „**Finish**“ for completing the installation and to start the configuration.

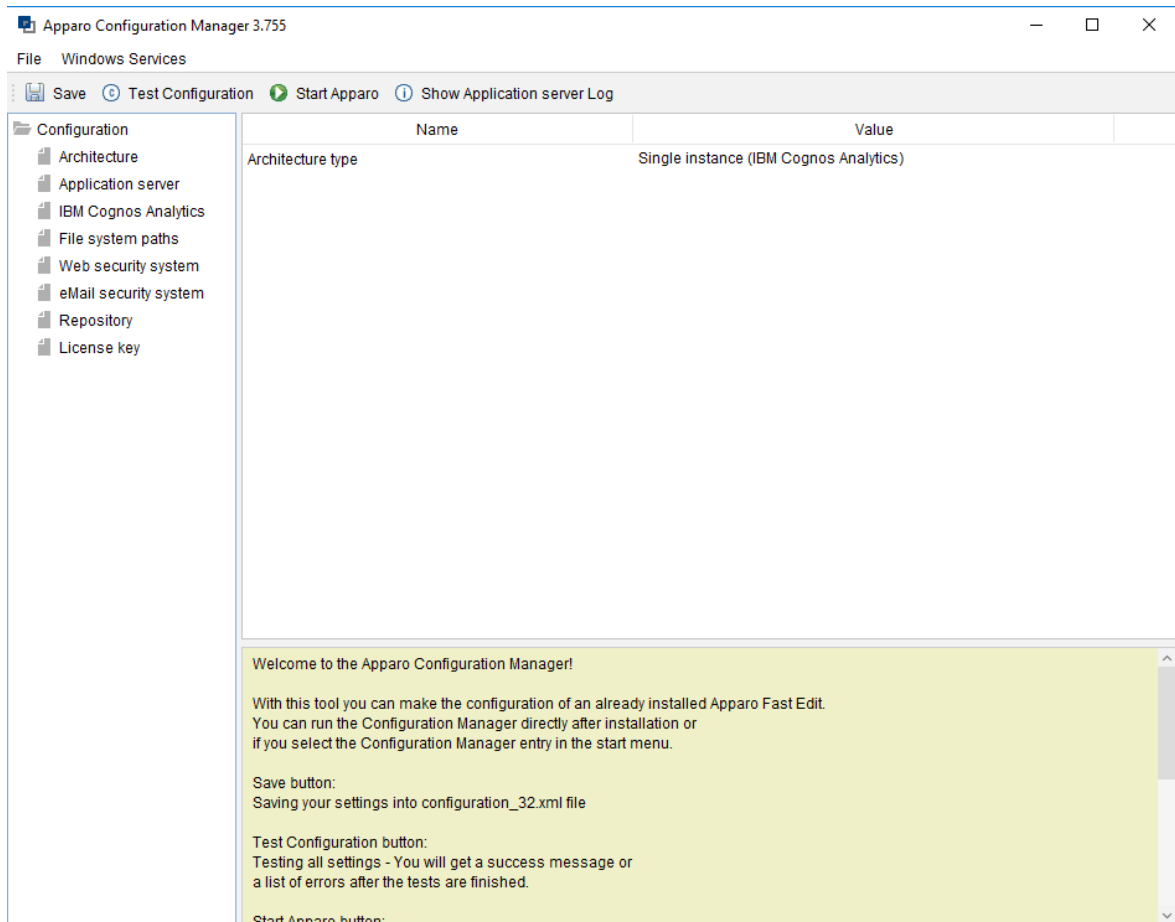
4 Configuration the Apparo application server

1	Preparation Creation of a database user for the Apparo repository
2	Installation Starting setup file for installation of the files
3	Configuration the Apparo application server Using Apparo Configuration Manager to configure the installation
4	Creating the Apparo Designer entry in Cognos portal Creating the start entry of Apparo Designer
5	Configuration the Apparo gateway Configuration of the IIS web server
6	Installing clients

With the **Apparo Configuration Manager** you are able to configure the already installed Apparo Fast Edit.

The settings are grouped into chapters (left side).

For each setting you can read a helpful description text in the yellow box.



To do list:

- | | |
|----------|--|
| 1 | Define all settings |
| 2 | Press the „Test Configuration“ button for testing all settings. |
| 3 | Press the „<u>Start Fast Edit</u>“ button for starting the application server |
| 4 | <p>You can see the log file of the application server with pressing „<u>Show Log</u>“</p> <p>If the application server is running then you can see in the log:</p> <pre> +++++ + Apparo Fast Edit 3.3.0.x (Build nnn) was successfully started at 07.11.2023 02:37:41 + +++++ </pre> |

Test of an Apparo application servers without using an Apparo gateway:

<http://<applicationserver:<startport>/apparo/pages/apptest.xhtml>

Example:

<http://localhost:18000/apparo/pages/apptest.xhtml>

With this URL you can test if the Apparo application server is running fine or has problems.

Output:

Applikationsstatus

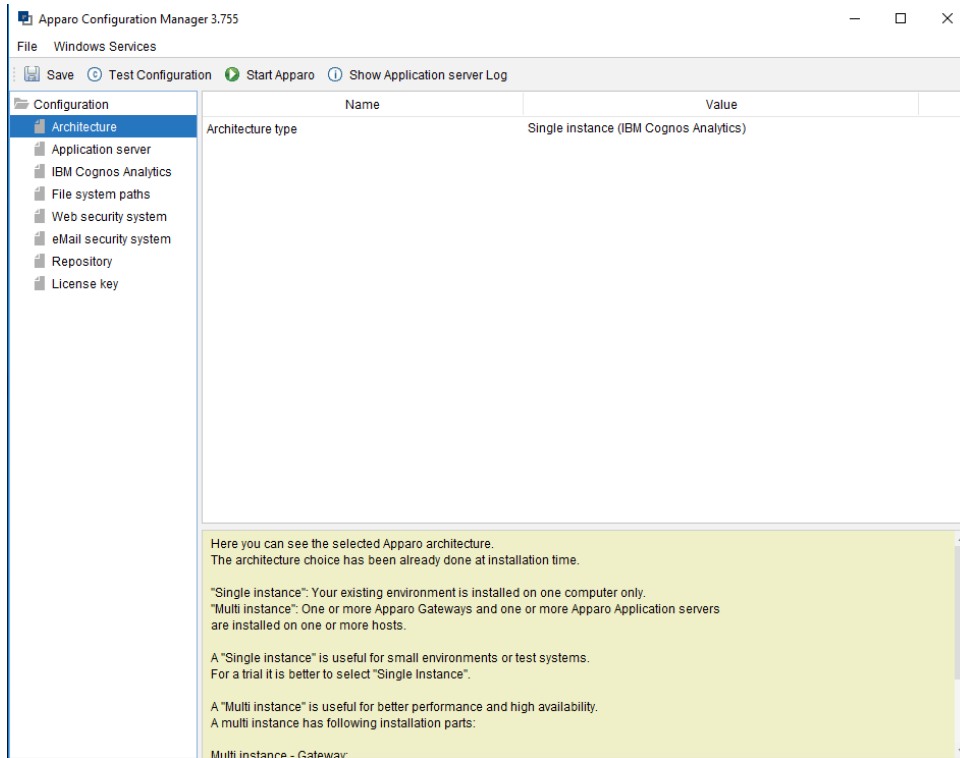
Apparo 3.3.0.0 (build: 900)

- Repository connection ✔
- Repository content ✔
- IBM Cognos connection ✔

Test done in 61 ms.

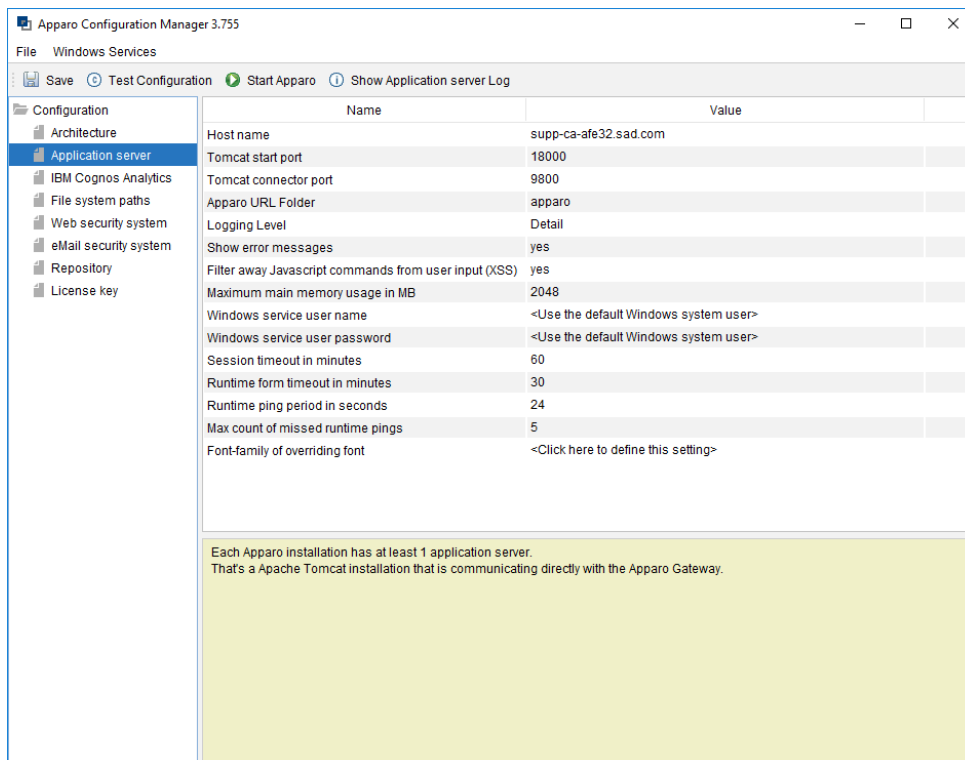
4.1 Architecture

In this section of the Configuration Managers you can find the selected Apparo Fast Edit architecture. This architecture was defined at installation time and is not changeable now.



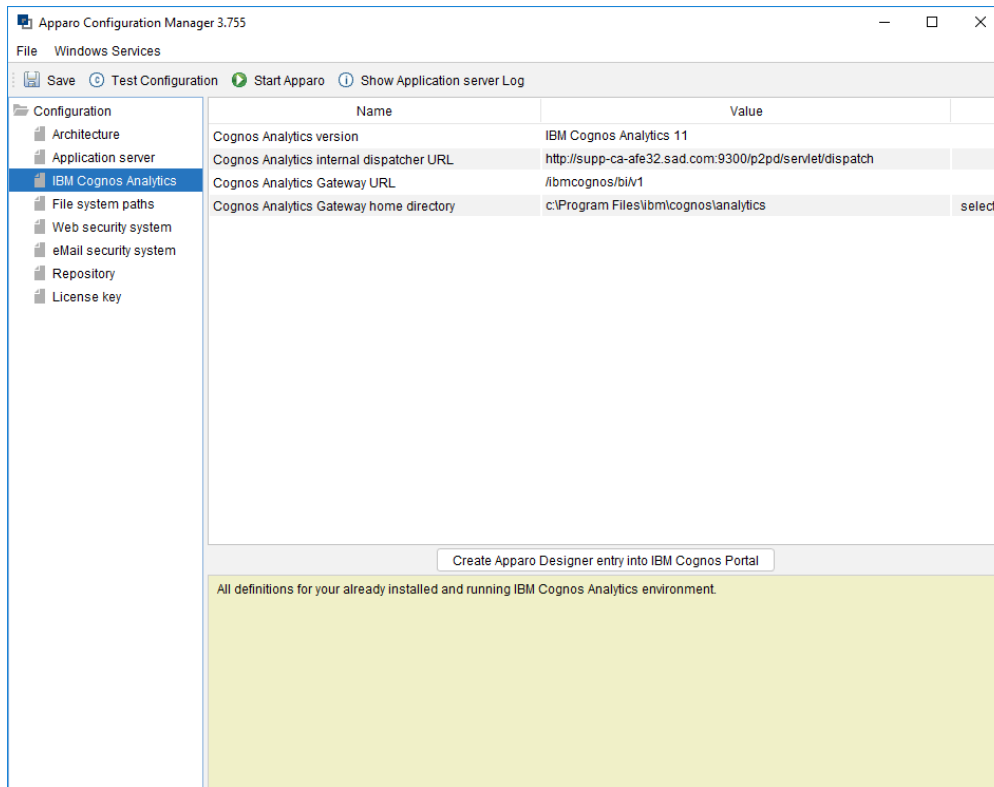
4.2 Application Server

Settings for the application server, e.g. memory.



4.3 IBM Cognos Analytics

Settings for the already installed IBM Cognos Analytics environment:



4.4 File system paths

With the file systems paths you can define the place for storing batch files that can be called from a Business Case, Java test classes for data quality checks, path to the client definitions, Oracle client and Java keystore for certificates.

	Name	Value	
Configuration			
Architecture	File path to batch/executeable files	/usr/local/Apparo/FastEdit/user_scripts	select
Application server	File path to client definitions	/usr/local/Apparo/FastEdit/clients	select
File system paths	File path to custom java classes	/usr/local/Apparo/FastEdit/user_scripts	select
Web security system	Oracle Client path to tnsnames.ora	\$ORACLE_HOME/network/admin	select
eMail security system	Java Keystore path and name	/usr/lib/jvm/java-1.8.0/jre/lib/security/cacerts	select
Repository	Java Keystore password	***	
License key			

The file system paths are used for executing of scripts and java testing classes.

4.4.1 File path to batch/executable files

It is possible to call executable files, scripts, batch files, javascript files etc. in a Business Case. The Apparo system wide file directory is defined here. Every Business Case of every client can access this file directory.

Each client has an own user_scripts file directory that is accessible for Business Cases of this client **only**. You can find this file directory in the file directory of the client in the clients file directory.

4.4.2 File path to client definitions

Client depending CSS files and icons are stored in the clients file directory. In a cluster environment all Apparo instances must be able to access this file directory.

4.4.3 File path to custom java classes

It is possible to call Java classes in a Business Case. The Apparo system wide file directory is defined here. Every Business Case of every client can access this file directory.

4.4.4 Oracle Client path to tnsnames.ora

If you want to use an Oracle Client that is installed server-side then you must define the path to the used tnsnames.ora file.

4.4.5 Java Keystore path and name

If you want to use TLS/SSL connections to other servers like application servers, databases or LDAP/Active Directory servers and the certificate is not public available then you must add your certificates into the Java machine that is used for Apparo.

The certificates are stored in [JAVA_HOME]\lib\security\cacerts

You can import your certificate with following command.

In this example Apparo is installed in "C:\Program Files\Apparo", the certificate file has the name "C:\myCertificate.crt" and the default password of the key store is "changeit".

```
"C:\Program Files\Apparo\FastEdit\OpenJDK\bin\keytool" -importcert -file C:\myCertificate.crt -alias my.company.com -keystore "C:\Program Files\Apparo\FastEdit\OpenJDK\lib\security\cacerts" -storepass changeit
```

After that you must restart the Apparo Configuration Manager again.

4.4.6 Java Keystore password

The Java key store is secured with a password. Default password is "changeit".

4.5 Web security system

	Name	Value
<ul style="list-style-type: none"> Configuration <ul style="list-style-type: none"> Architecture Application server IBM Cognos Analytics File system paths <li style="background-color: #0056b3; color: white;">Web security system eMail security system Repository License key 	Web security groups for administrators	<Click here to define this setting>

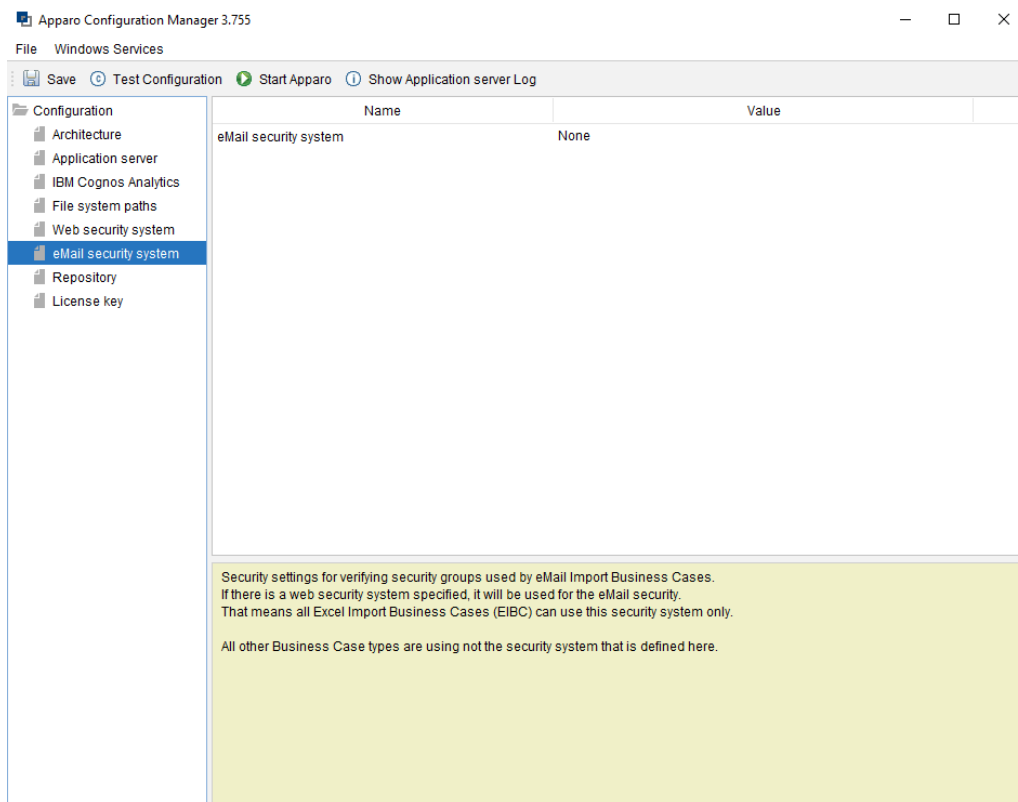
If a user is member of the security group that is here defined then this user has **full access** and can see and change the content of all clients in the Apparo Designer.

If this setting remains **empty** then everybody has **full access**.

Apparo has access to the Cognos Analytics security system and therefore knowing all groups.

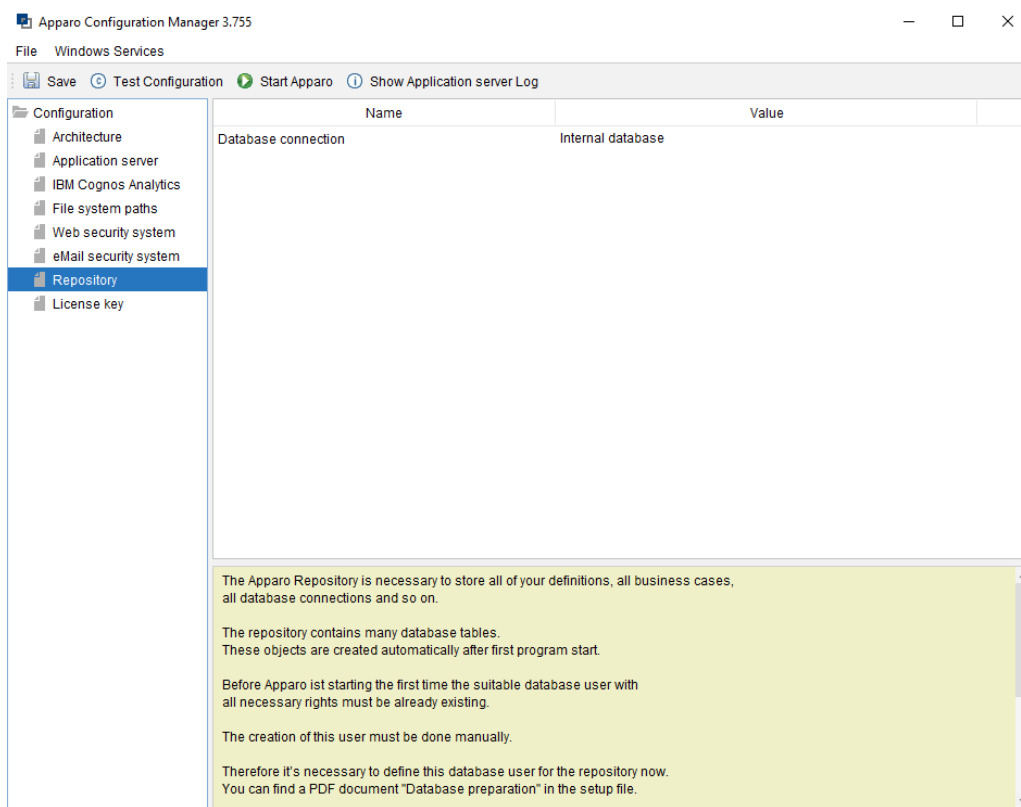
4.6 eMail security system

The Excel Import Business Case is running outside of the Cognos security and need therefore an own security system.



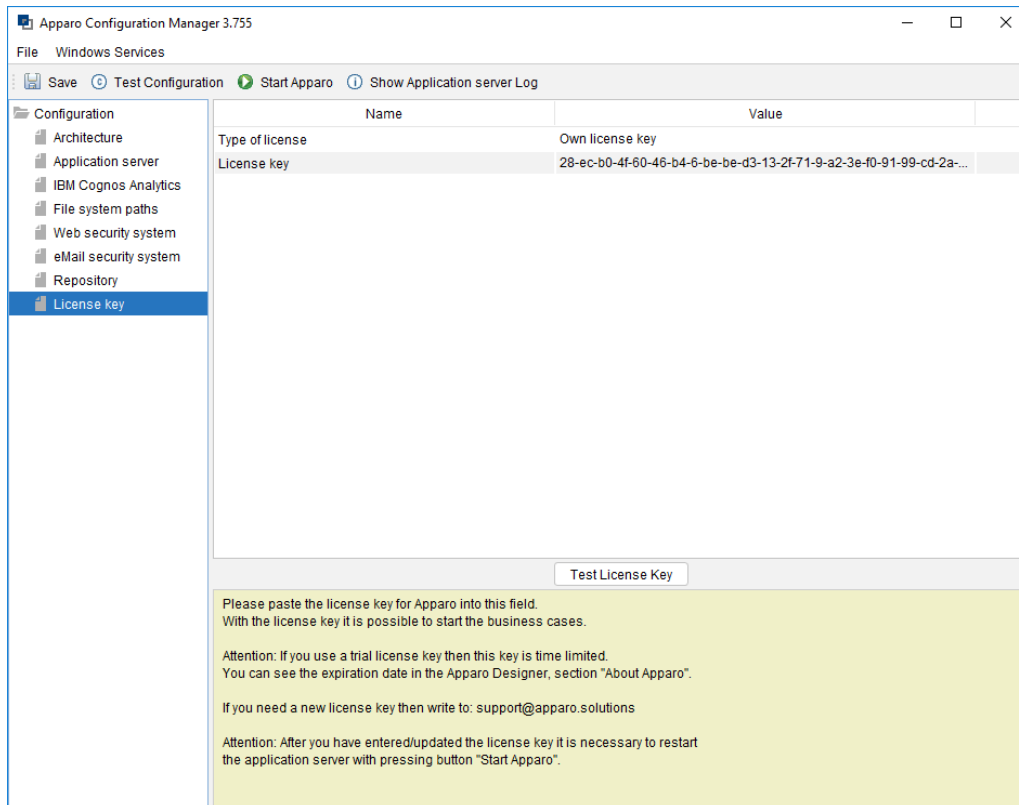
4.7 Repository

The database connection to the Apparo repository:



4.8 License key

In this section you can add & change the license key. This key is necessary to run Apparo Fast Edit.



To complete the installation, you can save and test the configuration.

If everything is OK, please start the server by clicking the button 'Start Fast Edit'.

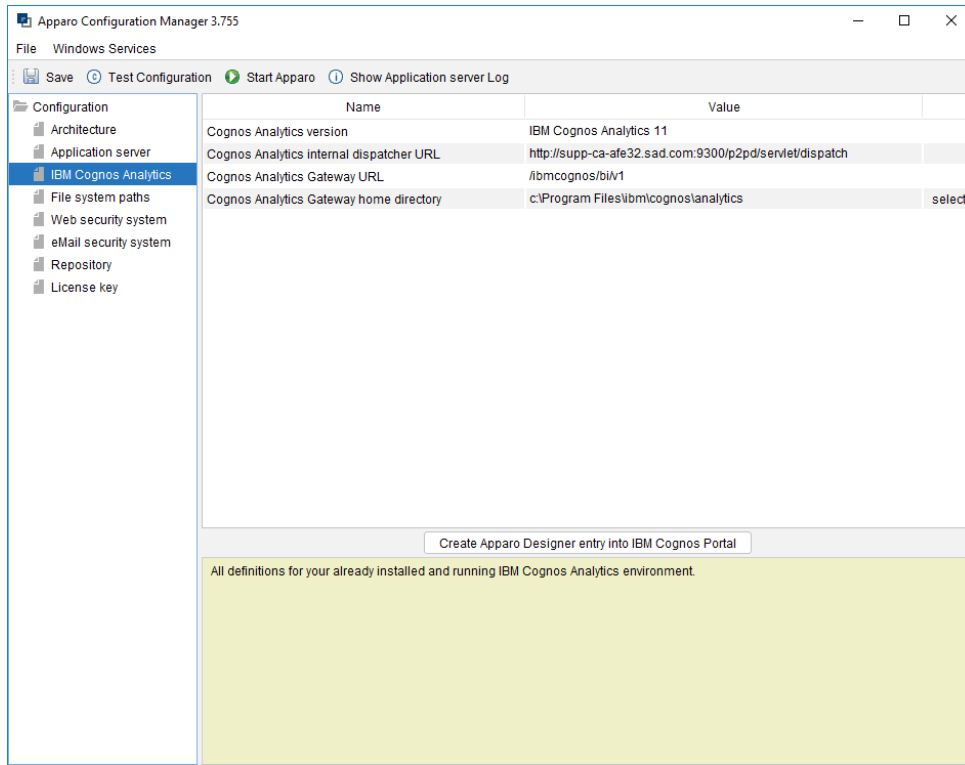
Using this button, it is deploying the configuration and starting the server.

5 Creating the Apparo Designer entry in IBM Cognos portal

1	<p>Preparation Creation of a database user for the Apparo repository</p>
2	<p>Installation Starting setup file for installation of the files</p>
3	<p>Configuration the Apparo application server Using Apparo Configuration Manager to configure the installation</p>
4	<p>Creating the Apparo Designer entry in Cognos portal Creating the start entry of Apparo Designer</p>
5	<p>Configuration the Apparo gateway Configuration of the IIS web server</p>
6	<p>Installing clients</p>

Possibility #1

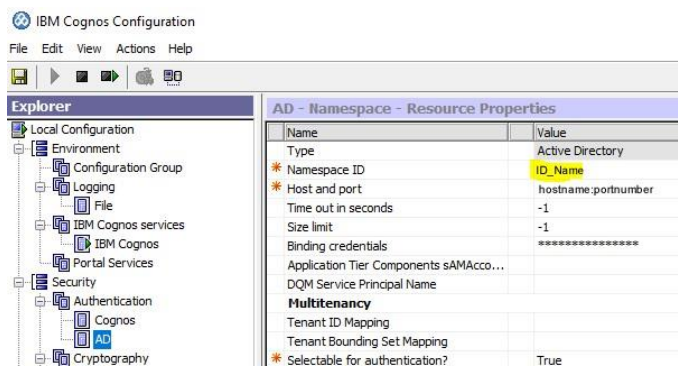
The portal entry for starting the Apparo Designer can be created with the Configuration Manager:



Click the Button **‘Create Apparo Designer entry into IBM Cognos Portal’**

In the next step you will be asked to enter your Cognos credentials:
This credential will be not stored somewhere and will be just used for login once.

Please take the **“Namespace ID”**:



Create Apparo Designer entry into IBM Cognos Portal

Enter your credentials for IBM Cognos Analytics

Namespace ID: AD

Login: Administrator

Password:

OK Cancel

Select the desired Cognos target folder and click 'Create Apparo Designer entry'

Create Apparo Designer entry into IBM Cognos Portal

Select portal folder in that the new entry must be stored

- Available Cognos Analytics folders
 - Apparo Tutorials
 - Cognos Samples
 - Demonstration Apparo & Cognos Analytics
 - Apparo University - learning Cognos Analytics
 - Step 01 - Commenting & file attachments
 - Step 02 - Commenting with history
 - Step 04 - Dashboard & Workflow
 - Step 05 - Scripts & procedures
 - Step 06 - Excel export & import
 - Step 07 - Data Quality

Create Apparo Designer entry Cancel

You can see this new entry in the Cognos portal:

Name	Modified	Owner
Apparo Designer	2.6.2016	Unknown
subfolder	3.6.2016	Anonym

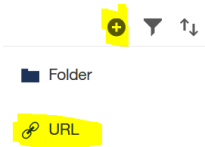
Possibility #2

Starting with CA 11.0.10 you can define hyperlinks manually:

Please copy the text

/ibmcognos/bi/v1/apparoDesigner.html

... and create a new entry in a team content folder, e.g. "Apparo":



Press the + icon and select URL.

Enter name and URL:

The image shows a 'Create URL' dialog box. The title is 'Create URL'. Below the title, there is a description: 'Specify a name and URL. Optionally, specify a description and screen tip.' The dialog has several input fields: 'Name' (containing 'Apparo Designer'), 'Description' (with the placeholder 'Add a description'), 'Screen tip' (with the placeholder 'Add a screen tip'), 'URL' (containing '/ibmcognos/bi/v1/apparoDesigner.html'), and 'Location' (containing 'Team content > Apparo'). At the bottom, there are 'OK' and 'Cancel' buttons. A link 'View acceptable domains' is visible below the URL field.

Press OK button.

6 Configuration of the Apparo gateway

1	Preparation Creation of a database user for the Apparo repository
2	Installation Starting setup file for installation of the files
3	Configuration the Apparo application server Using Apparo Configuration Manager to configure the installation
4	Creating the Apparo Designer entry in Cognos portal Creating the start entry of Apparo Designer
5	Configuration the Apparo gateway Configuration of the IIS web server
6	Installing clients

6.1 Configuration of the Microsoft Internet Information Server (IIS) 7 and higher

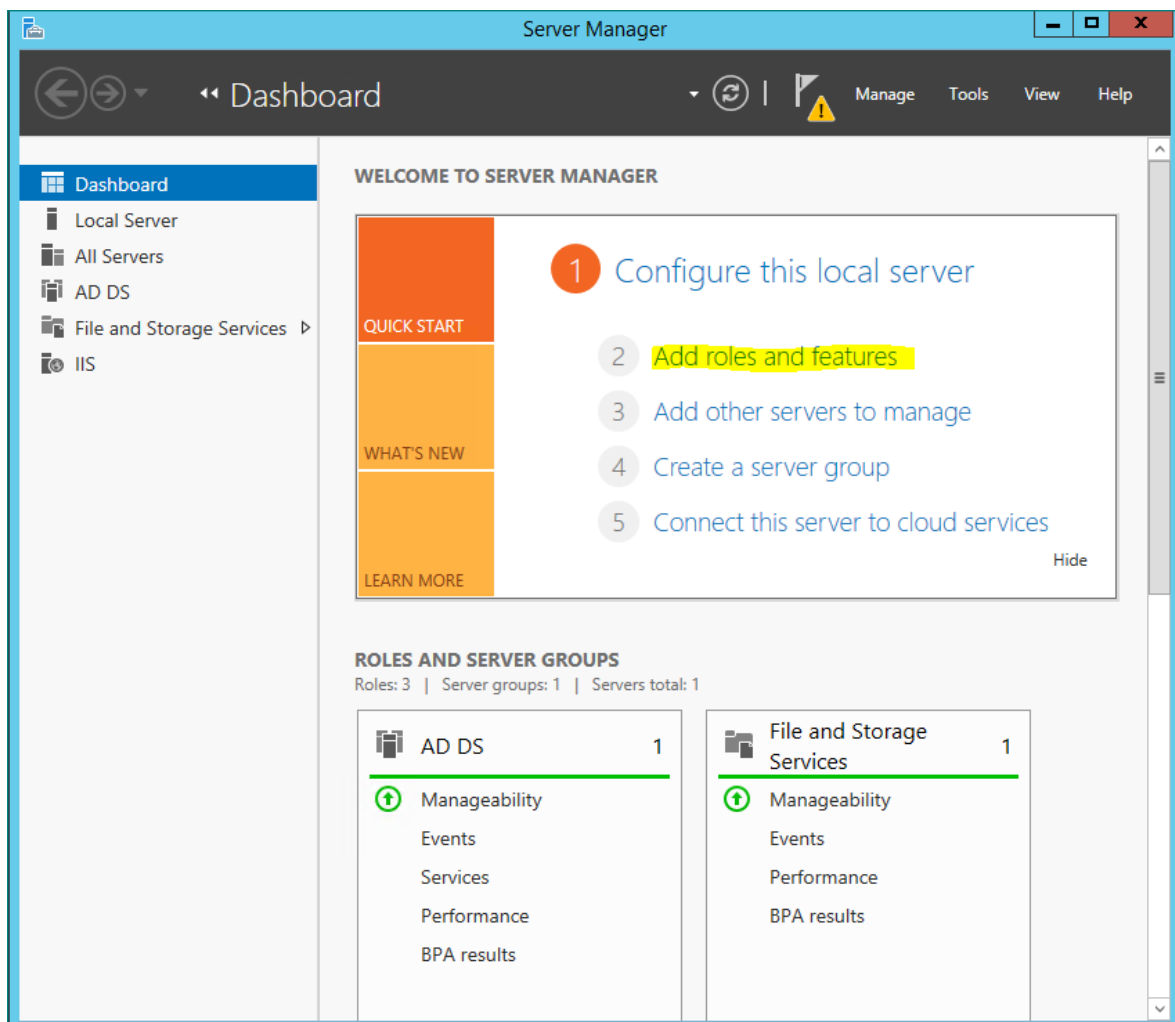
The IIS must support ISAPI modules.

This enhancement must be installed first.

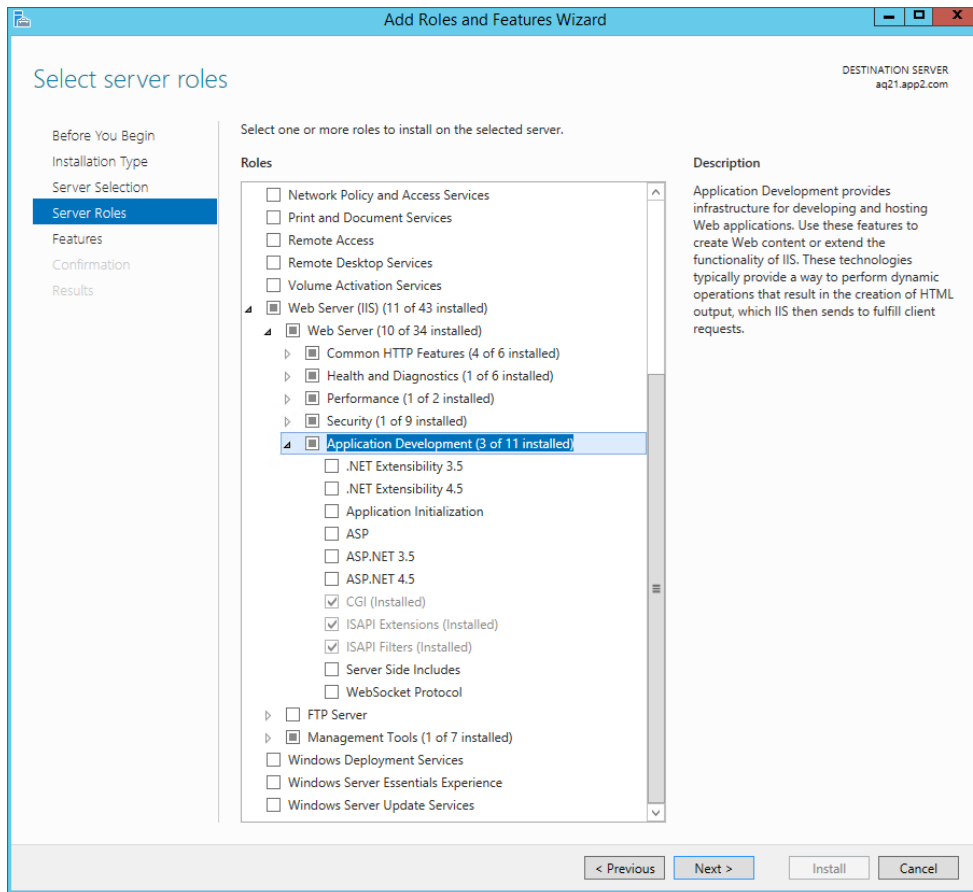
Please start the **Server Manager** of the Windows operating system.

Select:

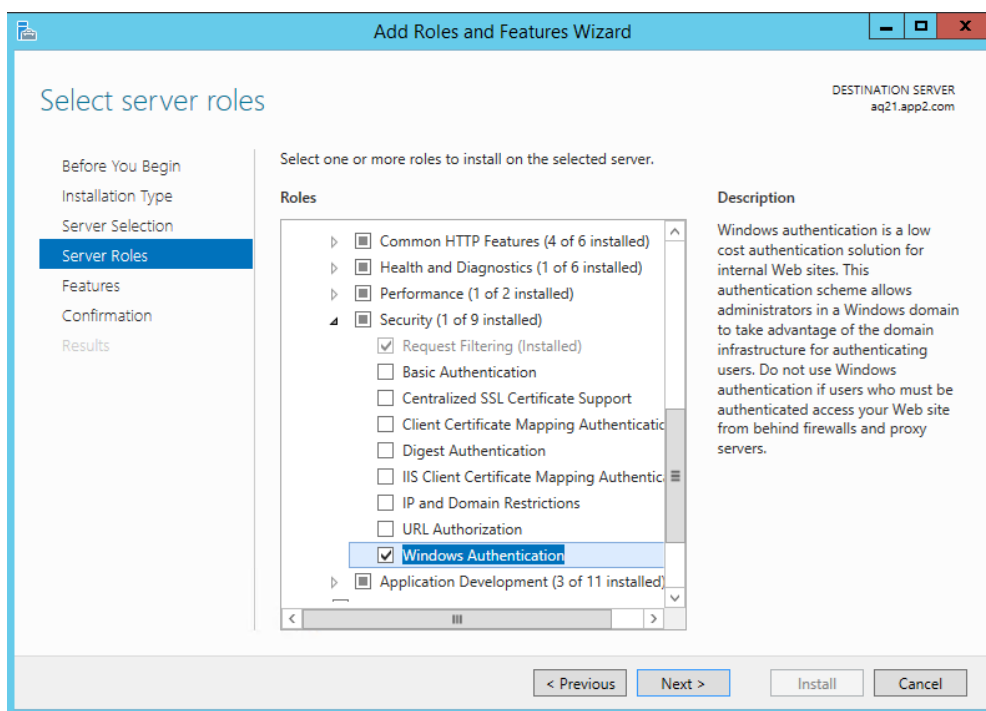
- Add roles and feature:



Please check if selections **ISAPI Extensions** and **ISAPI Filters** are enabled.



Please enable in chapter „**Security**“ the feature „**Windows Authentication**“:



After that the IIS is ready for the next installation tasks.

Following steps are necessary:

<p>1</p>	<p>A new virtual directory apparo must show to file directory „cgi-bin“</p>
<p>2</p>	<p>Allowing ISAPI filter</p>
<p>3</p>	<p>Installation of the ISAPI filter with the name apparo using IIS_fastedit.dll</p>
<p>4</p>	<p>Defining a new rule in Rewrite URL feature</p>

Important

Before starting of the IIS configuration, it is important that the configuration with the Apparo Configuration Manager is successfully finished and the application server has already started with the button “Start Apparo”.

The IIS configuration guide is also available as tutorial video in the Apparo YouTube channel:

<http://movies.apparo.solutions>

You can choose between 2 different installation possibilities:

1. Using a script that is making all configuration steps for the IIS **automatically**. This is the normal way.
2. Making the configuration steps **manually**

6.1.1 Make configuration of IIS using script

Open File Explorer and go into file directory

[APPARO HOME]\FastEdit\cm

Run the script “**MakeConfigurationIIS.bat**” as Administrator user.

It is using default settings, like ibmcognos for the virtual directory for Cognos Analytics and Default Web Site for the web site name.

If necessary then you can change these settings in the script.

After execution of this batch the installation of the Apparo gateway is successfully finished.

6.1.2 Make configuration of IIS manually

If you want to make the configuration manually then please follow following steps.
If you want to use the script-way then please read the chapter before.

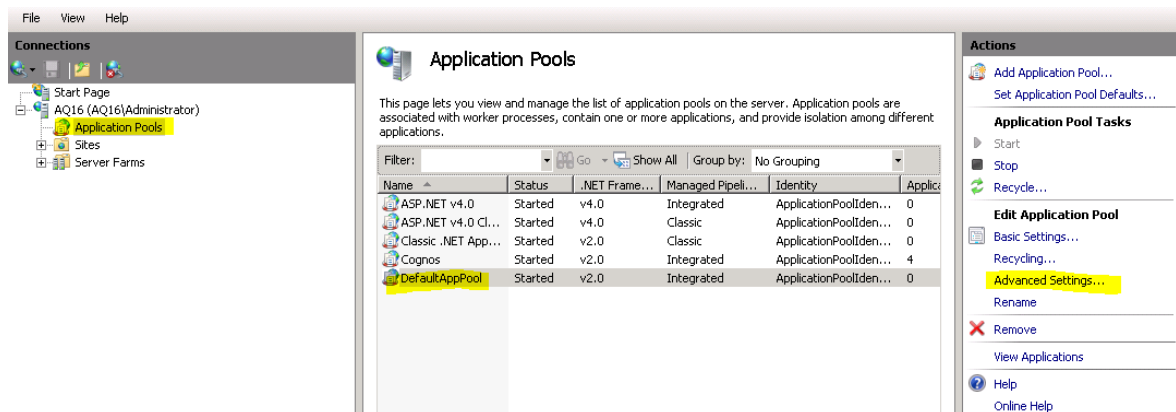
1	A new virtual directory apparo must show to file directory „cgi-bin“
----------	--

**You must use a local Windows Administrator account for installation.
Using a domain account with administrator role is not always working correctly.**

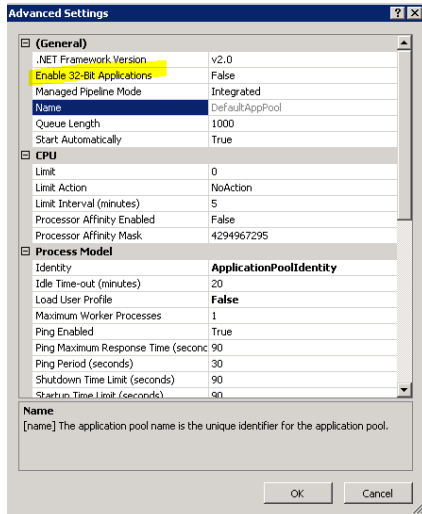
You can use an own Application Pool or the DefaultAppPool for Apparo Fast Edit.

***You must use the same Application Pool for Cognos, Apparo and Default Website.
The Application Pool must be 64 bit.***

Please analyze the settings of the “DefaultAppPool” Application Pool first and select in the “Application Pool” folder the “DefaultAppPool” entry:



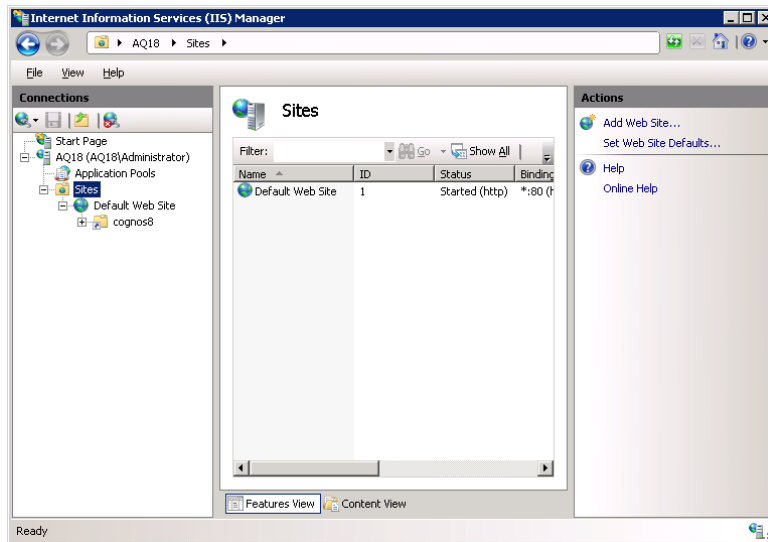
Press now the “Advanced Settings ...” entry on right page:



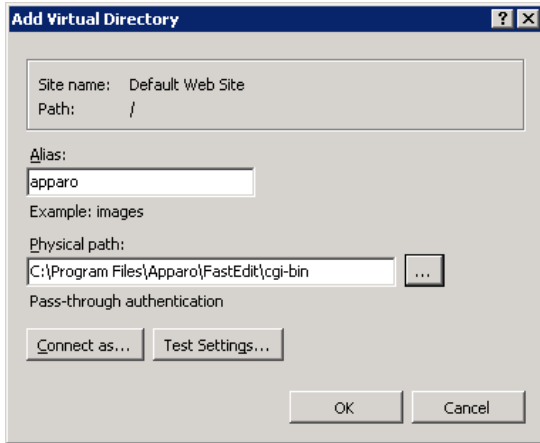
Please check the setting “Enable 32-Bit Applications”. It must be “false”.

Next step:

Open the IIS console:

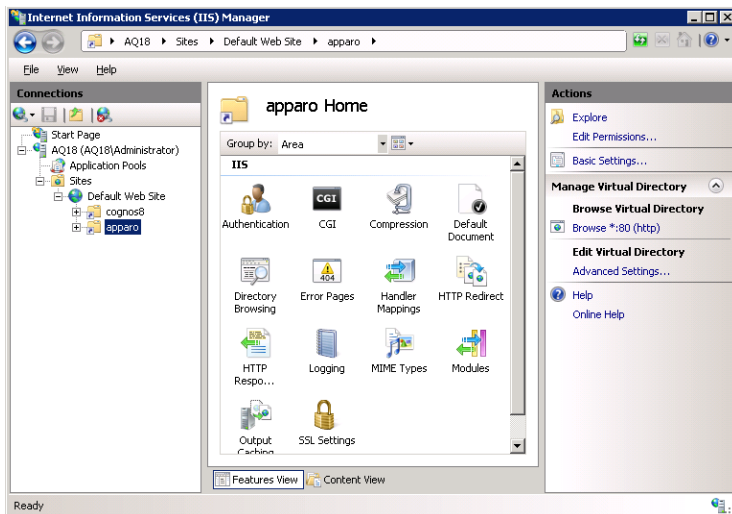


Choose the „Default Web Site“, press right mouse button and select „Add virtual Directory“.



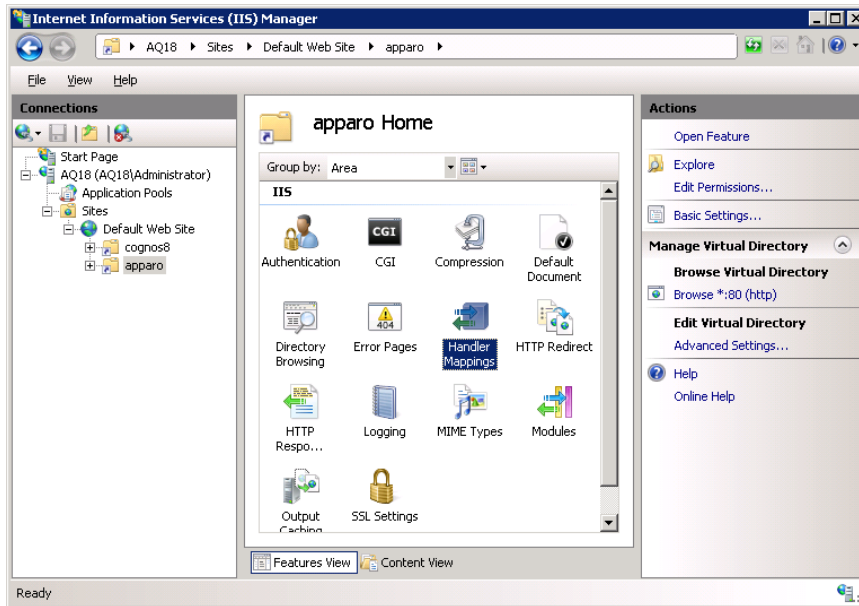
Enter the alias “**apparo**” and the path to the cgi-bin file directory of Apparo Fast Edit.

Press „OK“

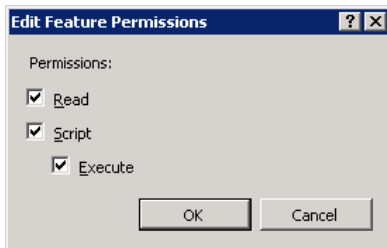


This directory must have executable rights:

Select **“apparo”** folder again and double-click **“Handler Mappings”**



Select on the right side **“Edit Feature Permissions...”** and enable **“Execute”**.



Press **“OK”**.

Defining the mapping:

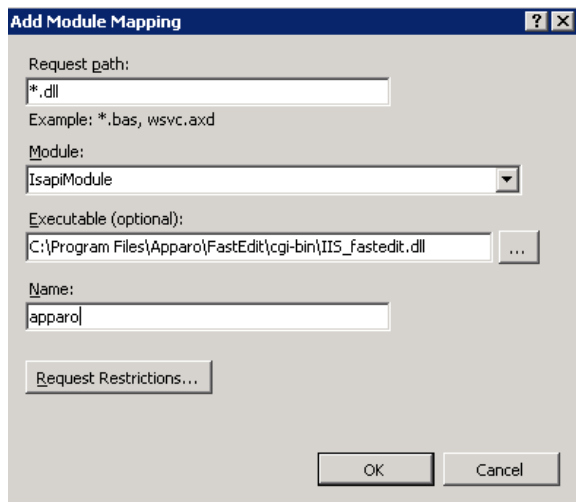
Choose the new created virtual directory **„apparo“**.



Double click **Handler Mappings** - now you can define a new mapping.

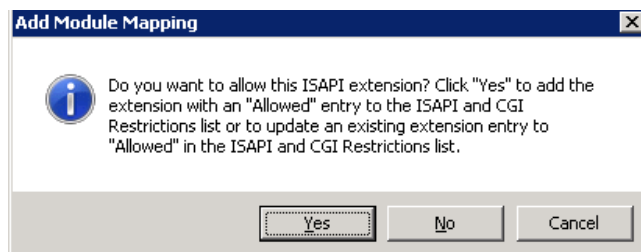
Select entry **„Add Module Mapping...”** from the right side.

Now you see a new window for the mapping definition.
Please enter the necessary entries:



„Executable“ must contain the valid path to the used ISAPI file IIS_fastedit.dll.

Now press „Ok“ and

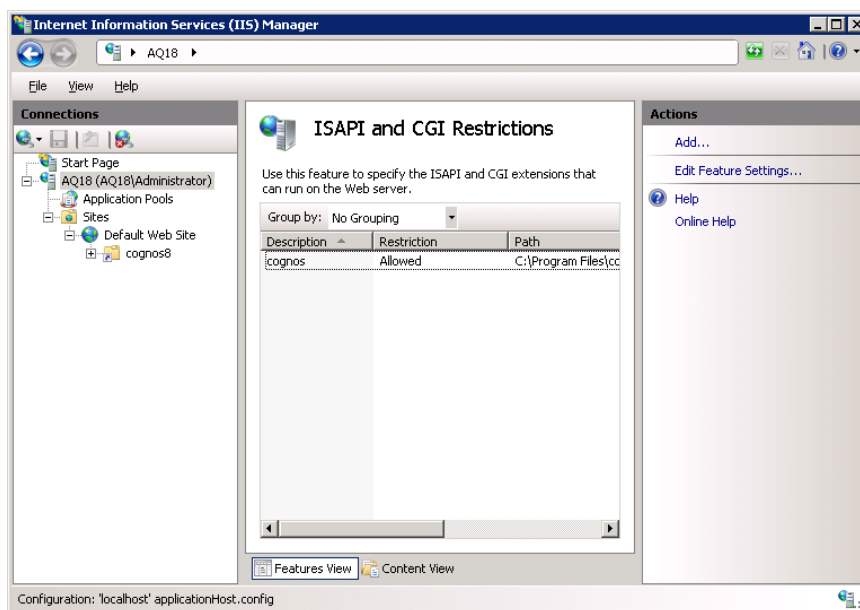
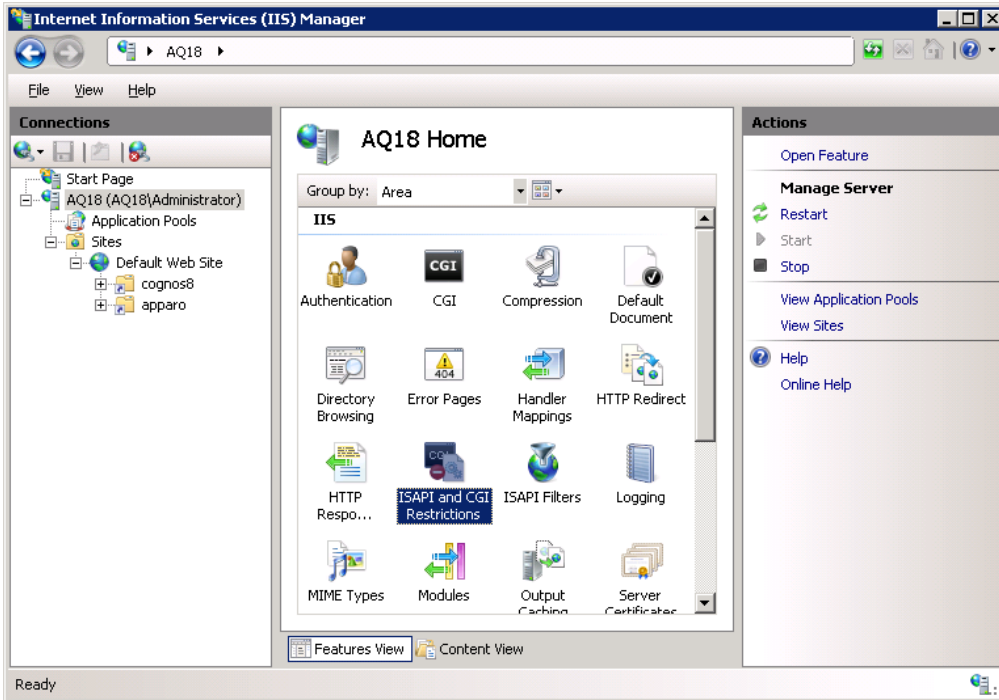


then „Yes“.

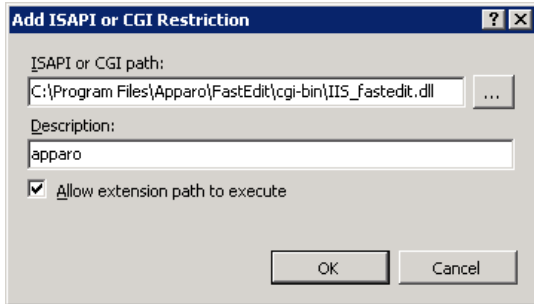
2 Allowing ISAPI filter

Click the server name entry (important!)

Select the server name entry (here: AQ18) and double click “ISAPI and CGI Restrictions”:



Press “Add...” and input:

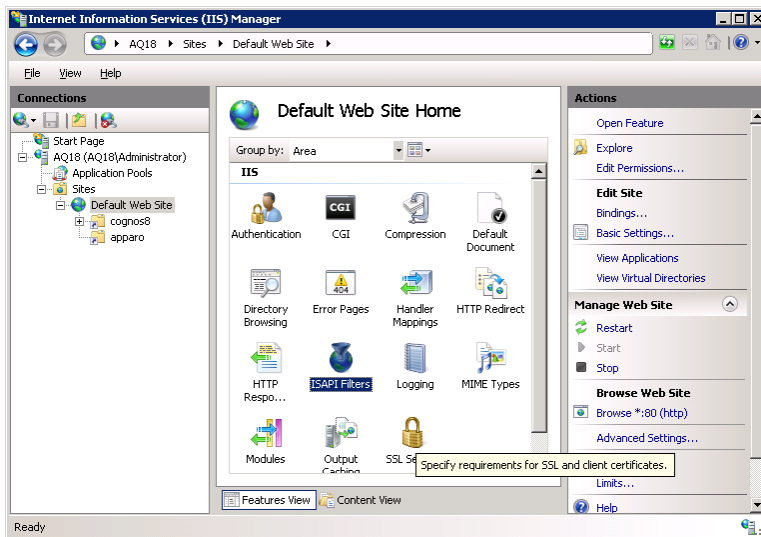


Enable “Allow extension path to execute” and press “OK”.

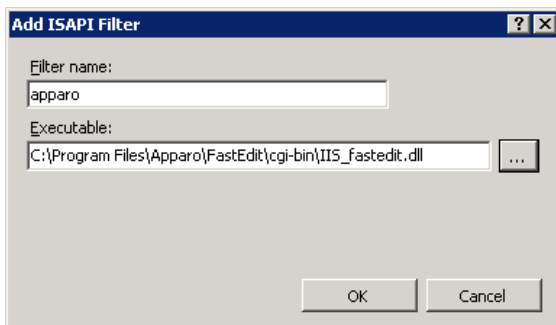
3

Installation of the ISAPI filter with the name apparo using IIS_fastedit.dll

Select again “Default Web Site” and double click “ISAPI Filters”:



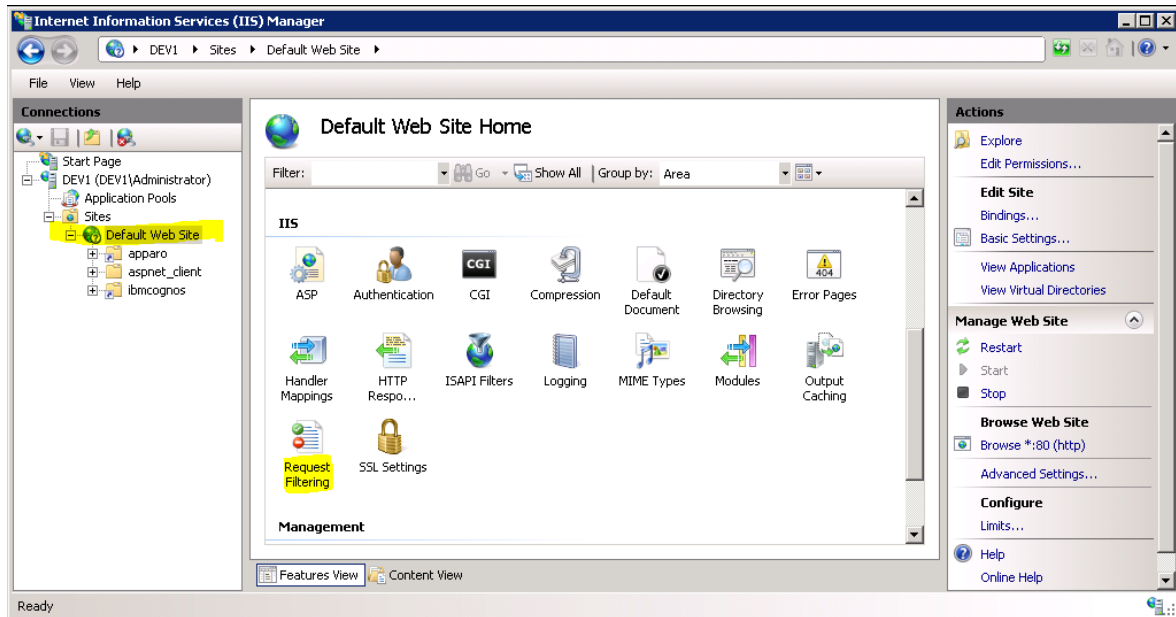
Press “Add...”



Input the filter name „apparo“ and select the **IIS_fastedit.dll** in file directory **[APPARO_HOME]\FastEdit\cgi-bin**

Press “OK”.

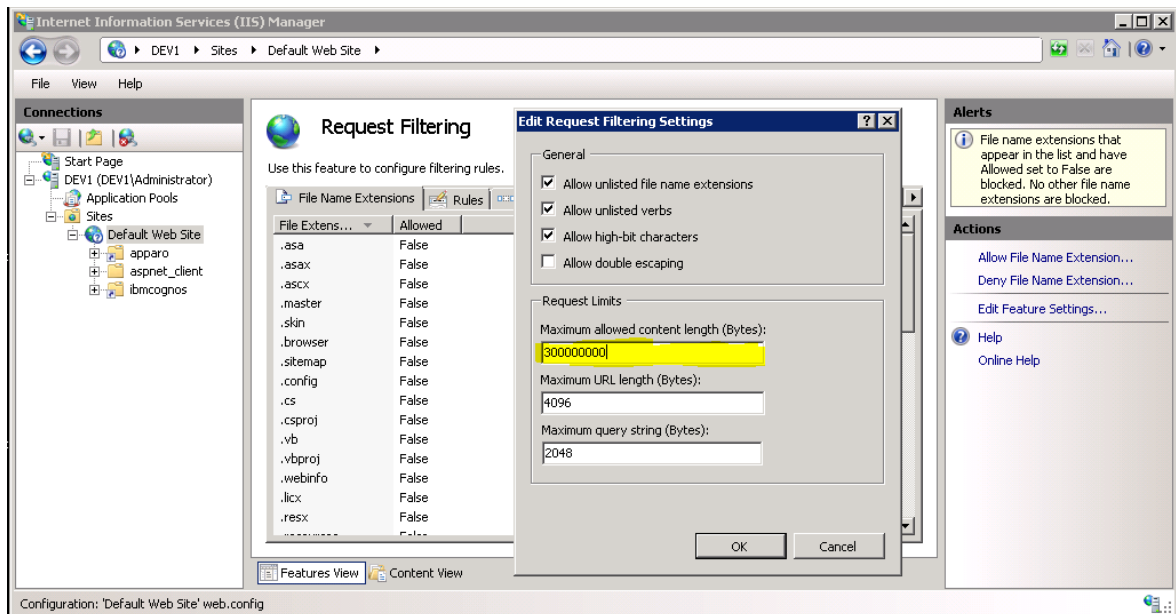
Resizing the upload limit



Select "Default Web Site" in the tree view, left side.

Select „Request Filtering“ with double-click.

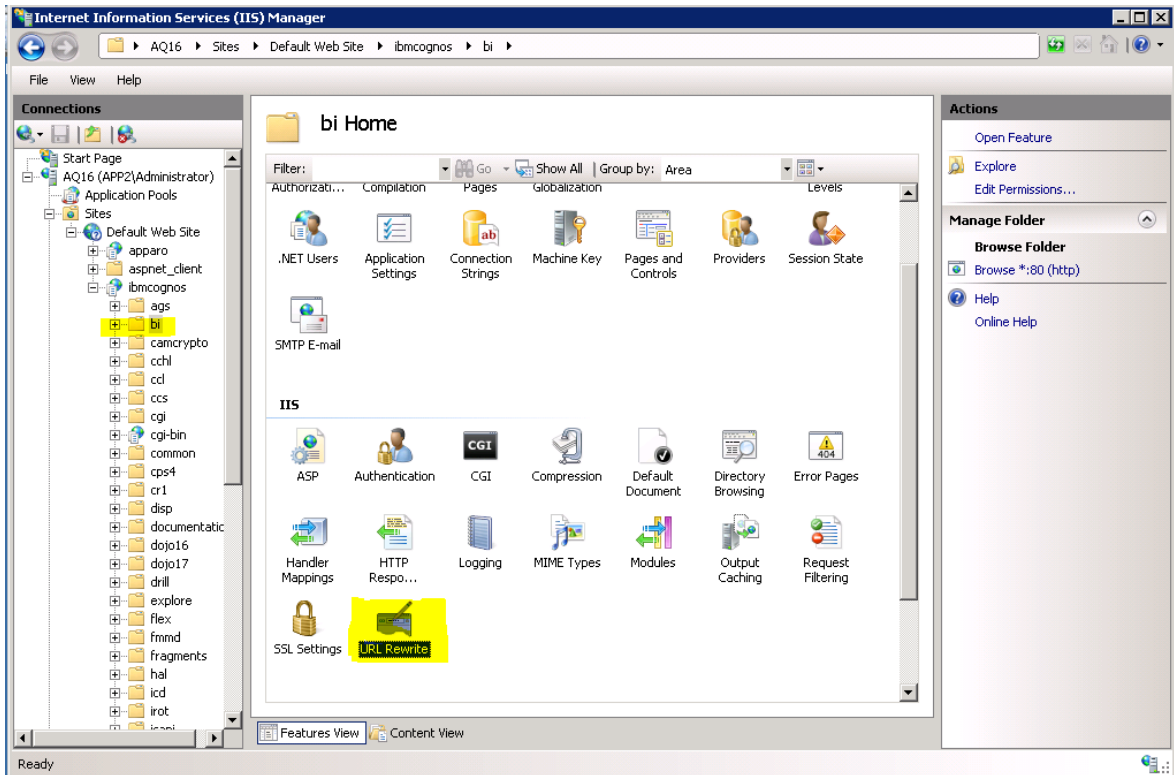
Select "Edit Feature Settings" on right side.




Change value of Maximum allowed content length (Bytes) to 300 000 000 (= 300 MB).

4 Defining a new rule in Rewrite URL feature

Select virtual sub folder “bi” in folder “ibmcognos” and double click “URL Rewrite” icon.








Now you should see:

 **URL Rewrite**

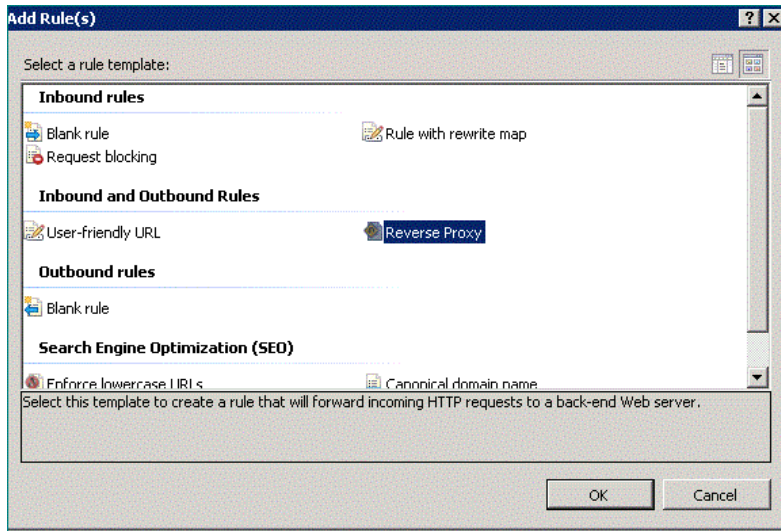
Provides rewriting capabilities based on rules for the requested URL address and the content of an HTTP response.

Inbound rules that are applied to the requested URL address:

Name	Input	Match	Pattern
 Headers	URL path after '/ibmcognos/b...	Matches	(.*)
 SSO Login	URL path after '/ibmcognos/b...	Matches	v1/login
 Legacy SSO	URL path after '/ibmcognos/b...	Matches	(v1/disp
 Reverse Proxy	URL path after '/ibmcognos/b...	Matches	(^\$)((^v
 Event Studio	URL path after '/ibmcognos/b...	Matches	^(ags cr

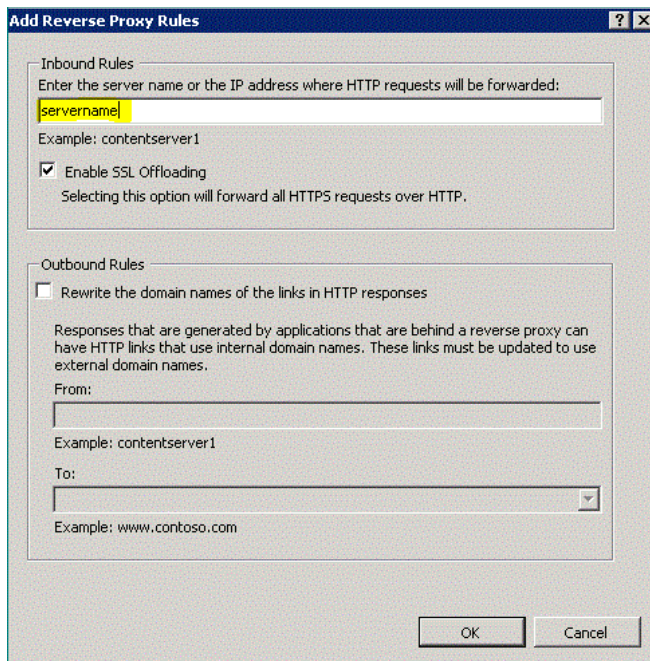
These rules are for IBM Cognos Analytics. Apparo Fast Edit need a similar rule.

Add a new rule (see right side) and press “Add Rule(s)”.



Double click “Reverse Proxy”.

Enter the current server name and press OK.



Now you see:

URL Rewrite

Provides rewriting capabilities based on rules for the requested URL address and the content of an HTTP response.

Inbound rules that are applied to the requested URL address:

Name	Input	Match	Pattern
⊕ Headers	URL path after '/ibmcognos/b...	Matches	(.*)
⊕ SSO Login	URL path after '/ibmcognos/b...	Matches	v1/login
⊕ Legacy SSO	URL path after '/ibmcognos/b...	Matches	(v1/disp
⊕ Reverse Proxy	URL path after '/ibmcognos/b...	Matches	(^\$) (^v
⊕ Event Studio	URL path after '/ibmcognos/b...	Matches	^(ags cr
⊕ ReverseProxyInboundR...	URL path after '/ibmcognos/b...	Matches	(.*)

Edit now the new rule and enter the yellow marked texts:

Match URL

Requested URL: Matches the Pattern Using: Regular Expressions

Pattern: (apparoDesigner|apparoBusinessCase|apparoAjax|apparoPageModule).html Test pattern...

Ignore case

Conditions

Server Variables

Action

Action type: Rewrite

Action Properties

Rewrite URL: /ibmcognos/{R:1}.html

Append query string

Log rewritten URL

Stop processing of subsequent rules

You must enter:

(apparoDesigner|apparoBusinessCase|apparoAjax|apparoPageModule).html

and

/ibmcognos/{R:1}.html

Press “Apply” (see right side).

After you have changed this rule it is time to rename this rule.


Please rename this rule to “**apparoReverseProxy**” using “Rename” feature (see right side).

Hint: If you want to use checkboxes in a List in a report then please add apparoTableModule too: (apparoDesigner|apparoBusinessCase|apparoAjax|apparoPageModule|apparoTableModule).html

Change the execution order:







Select the last rule (apparoReverseProxy) and press “Move up” to the top of this list.

Now you see following order:

 **URL Rewrite**

Provides rewriting capabilities based on rules for the requested URL address and the content of an HTTP response.

Inbound rules that are applied to the requested URL address:

Name	Input	Match	Pattern
 apparoReverseProxyInb...	URL path after '/ibmcognos/b...	Matches	(apparo
 Headers	URL path after '/ibmcognos/b...	Matches	(.*)
 SSO Login	URL path after '/ibmcognos/b...	Matches	v1/login
 Legacy SSO	URL path after '/ibmcognos/b...	Matches	(v1/disp
 Reverse Proxy	URL path after '/ibmcognos/b...	Matches	(^\$) (^v
 Event Studio	URL path after '/ibmcognos/b...	Matches	^(ags cr

It is necessary that the rule for Apparo Fast Edit has the first position.

Now the installation of the Apparo gateway is successfully finished.

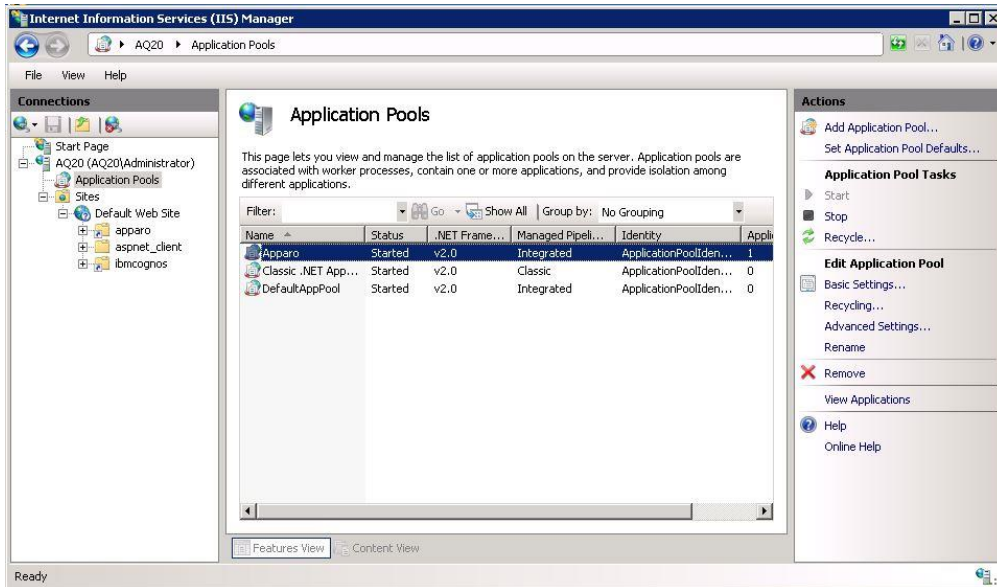
Checks:

- **test if the virtual directory is defined and it points to file directory cgi-bin**
- **test if the virtual directory has the right to execute**
- **test if this ISAPI filter is allowed**

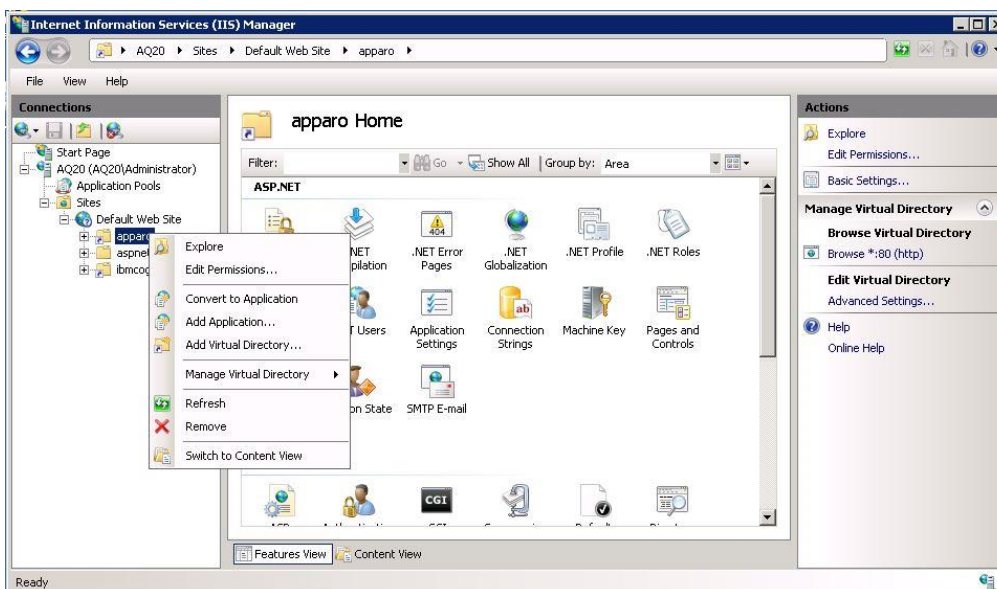
restart the IIS

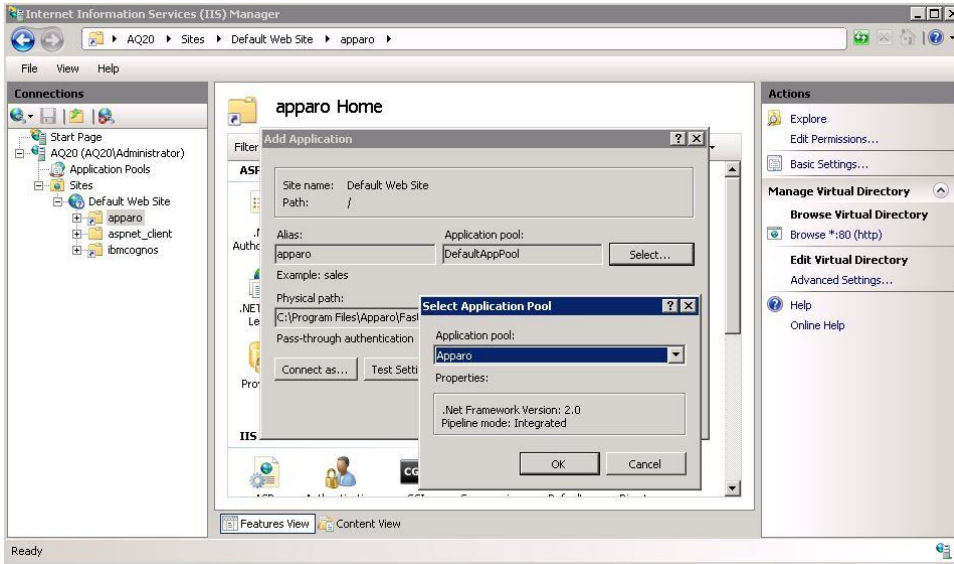
Using an own Application Pool

If you want to use a separate application pool instead of the “DefaultAppPool” then additional settings are required.

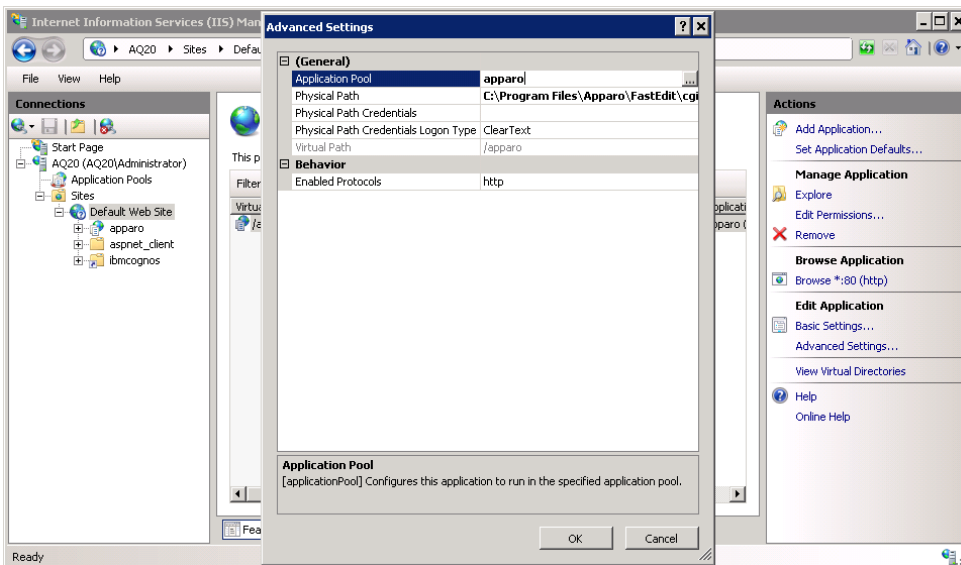


Click with the right mouse button on the virtual directory “**apparo**” and select “**Convert to Application**”





Then select the desired Application Pool with the ,Select ...' button.



,Default Web Site' must use the same Application Pool (Advanced Settings)

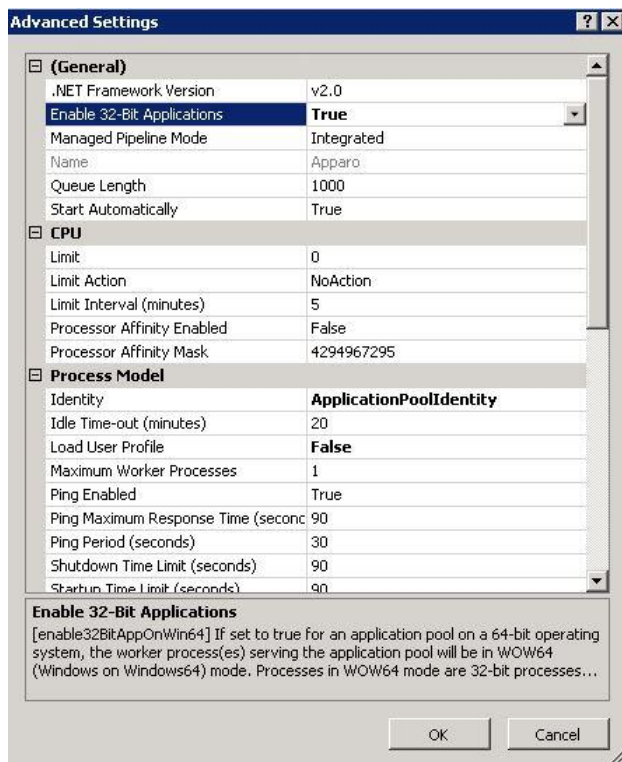
Other applications like Cognos are not affected by the application pool setting of the default web site.

Hint:

When using 64 Bit Windows, please check the settings of the Application Pool regarding the usage of the 32bit version (Advanced Settings -> Enable 32bit Application).

In case it is set to ,true', please use the file IIS_FastEdit_32bit.dll.

In case it is set to ,false', please use the file IIS_FastEdit_64bit.dll.



6.2 Configuration of the Apache 2.4 Webserver

This chapter is describing the configuration of Apache web server 2.4 and higher.

Hint: The configuration of Apparo Fast Edit using Apparo Configuration Manager must be already finished before you can continue.

Following installation steps are necessary:

Open the text file “**apache_cognos_analytics.txt**” in folder [APPARO_HOME]/FastEdit/cgi-bin

It has this or similar content (server names are of course different):

```
# put these rules into file cognos.conf at the beginning
RewriteEngine On
RewriteRule /ibmcognos/bi/v1/apparoDesigner.html /ibmcognos/apparoDesigner.html [PT,L]
RewriteRule /ibmcognos/bi/v1/apparoBusinessCase.html /ibmcognos/apparoBusinessCase.html [PT,L]
RewriteRule /ibmcognos/bi/v1/apparoAjax.html /ibmcognos/apparoAjax.html [PT,L]
RewriteRule /ibmcognos/bi/v1/apparoPageModule.html /ibmcognos/apparoPageModule.html [PT,L]
RewriteRule /ibmcognos/bi/v1/apparoTableModule.html /ibmcognos/apparoTableModule.html [PT,L]

# put these into the file httpd.conf
<IfModule mod_proxy.c>
    ProxyPass /apparo balancer://ApparoFastEdit/apparo
    ProxyPassReverse /apparo balancer://ApparoFastEdit/apparo
    ProxyIOBufferSize 32768
    <Proxy balancer://ApparoFastEdit>
        BalancerMember ajp://ip-172-31-28-181.eu-west-1.compute.internal:9800 route=s1 loadfactor=1
        ProxySet timeout=300
        ProxySet lbmethod=bytraffic
        ProxySet nofailover=0n
        ProxySet stickysession=JSESSIONID|jsessionid
    </Proxy>
    <Location /balancer-manager>
        SetHandler balancer-manager
    </Location>
</IfModule>
```

This file contains 2 parts:

1. Add the <IfModule mod... part at the end of the httpd.conf file like here and before the Cognos part.

```
# put these into the file httpd.conf

<IfModule mod_proxy.c>
  ProxyPass /apparo balancer://ApparoFastEdit/apparo
  ProxyPassReverse /apparo balancer://ApparoFastEdit/apparo
  ProxyIOBufferSize 32768
  <Proxy balancer://ApparoFastEdit>
    BalancerMember ajp://ip-172-31-28-181.eu-west-1.compute.internal:9800 route=s1 loadfactor=1
    ProxySet timeout=300
    ProxySet lbmethod=bytraffic
    ProxySet nofailover=0n
    ProxySet stickysession=JSESSIONID|jsessionid
  </Proxy>
  <Location /balancer-manager>
    SetHandler balancer-manager
  </Location>
</IfModule>
```

2. Add 5 rewrite rules manually into file httpd.conf – both must be placed directly before the include command for Cognos.

```
# put these rules into file cognos.conf at the beginning

RewriteEngine On
RewriteRule /ibmcognos/bi/v1/apparoDesigner.html /ibmcognos/apparoDesigner.html [PT,L]
RewriteRule /ibmcognos/bi/v1/apparoBusinessCase.html /ibmcognos/apparoBusinessCase.html [PT,L]
RewriteRule /ibmcognos/bi/v1/apparoAjax.html /ibmcognos/apparoAjax.html [PT,L]
RewriteRule /ibmcognos/bi/v1/apparoPageModule.html /ibmcognos/apparoPageModule.html [PT,L]
RewriteRule /ibmcognos/bi/v1/apparoTableModule.html /ibmcognos/apparoTableModule.html [PT,L]
```

Proxy settings

Enable following modules (they are normally already enabled):

```
LoadModule proxy_module modules/mod_proxy.so
LoadModule proxy_ajp_module modules/mod_proxy_ajp.so
LoadModule proxy_balancer_module modules/mod_proxy_balancer.so
LoadModule lbmethod_bytraffic_module modules/mod_lbmethod_bytraffic.so
```

Save the file httpd.conf and restart the web server.

Hint if using Red Hat Linux:

If you get an Apache error like:

[error] (13)Permission denied: proxy: AJP: attempt to connect to <servername:9800> failed

Please enter following command:

```
/usr/sbin/setsebool -P httpd_can_network_connect 1
```

Server Time out:

Please check that your Apache web server configuration has the setting

TimeOut 1800

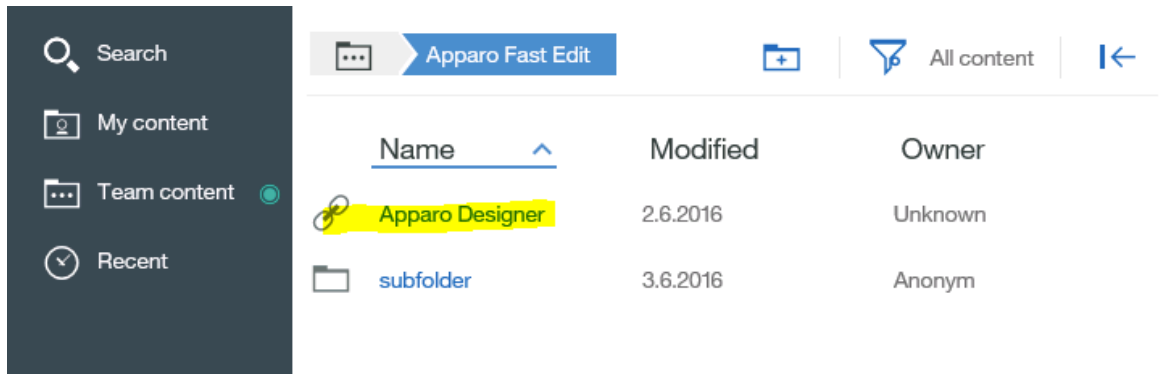
Apparo Fast Edit need much time for importing/exporting/upgrading and Excel import.

7 Installation clients

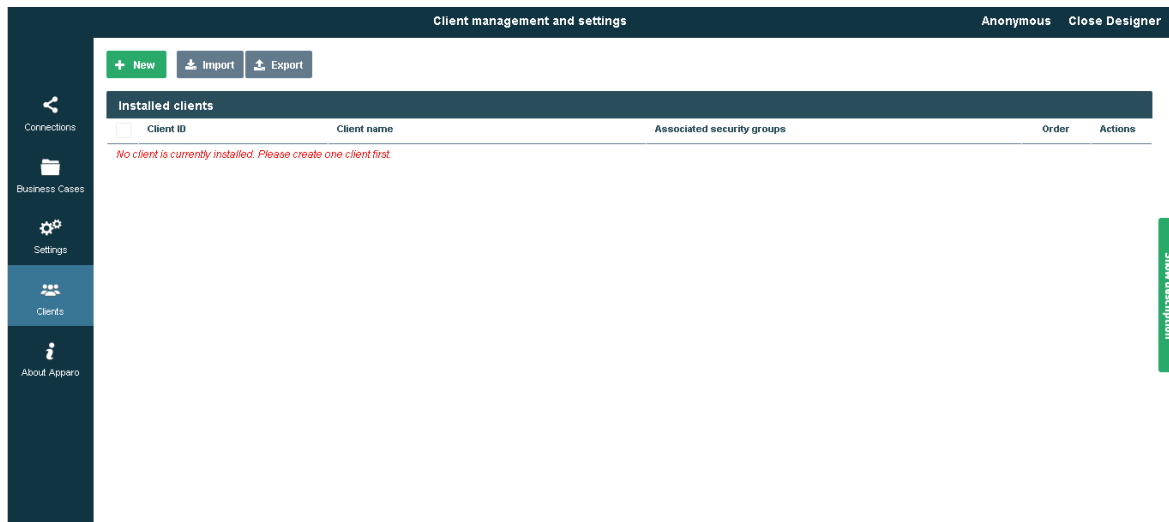
1	<p>Preparation Creation of a database user for the Apparo repository</p>
2	<p>Installation Starting setup file for installation of the files</p>
3	<p>Configuration the Apparo application server Using Apparo Configuration Manager to configure the installation</p>
4	<p>Creating the Apparo Designer entry in Cognos portal Creating the start entry of Apparo Designer</p>
5	<p>Configuration the Apparo gateway Configuration of the IIS web server</p>
6	<p>Installing clients</p>

Now it is necessary to install the clients.

Please open your IBM portal and select the entry “Apparo Designer”:



Now you should see:



Please read now the document “**Configuration Guide**” for defining/importing clients.

The installation & configuration on serverside is now successfully completed.

Please also read the following chapter 'Browser requirements'.

We recommend to open the "Training" Icon in the Apparo Designer. This page contains helpful training movies.

Demonstration Apparo Fast Edit Training Demonstration Close Designer

Training

Here you will find tutorial videos, the client to practice, as well as other helpful documents and links.

[Download: Apparo Tutorials Client Definition](#)

- Contains the client including online database access for practicing and following the tutorial videos
- Download, unzip and import the client file in Apparo Designer, menu client

[Video: Basics for IBM Cognos Analytics](#)

- Calling the Apparo Designer
- Adding the first client
- Creating database connections
- Creating list views and masks
- Filtering data

[Video 0070: Embedding Business Cases](#)

- Embedding Business Cases
- Filtering BCs with Cognos Analytics

[Video 0071: Embedded Master Detail Apps](#)

- Loading detail window with hyperlink
- Refreshing Master with triggered script file

[Video 0072: Calling Business Cases in an Extra Window](#)

- Calling the detail window in Cognos Analytics lists
- Call via button
- Passing parameters

[Video 0140: Variables - An Introduction](#)

- General Definition of Terms
- First variable types and simple application examples

[Video 0141: Variables - Practical application](#)

- Overview of all variable types
- Usage of variables and hints

Connectors

Business Cases

Settings

Clients

Training

About Apparo

Show description

8 Configuration Manager using command line

It is possible to automate the configuration process of the Configuration Manager.

The complete configuration is stored in the file **configuration.xml**

You can find this file in the [APPARO_HOME]/FastEdit/cm file directory.

Using this command line the configuration can be restored:

```
[APPARO_HOME]\FastEdit\cm\cmc.bat parameter1 parameter2 ...
```

Parameter name	Functionality
-?,--help	Displays this help text
-deploy true/false	Configuration Manager will deploy https://www.oracle.com/technetwork/database/application-development/jdbc/downloads/jdbc-ucp-183-5013470.html the setting files
-start true/false	Start Apparo Fast Edit (if no gateway)

9 Import/Export definitions using command line

You can export and import clients (including languages, folder, Business Cases, connections, DB-messages), Business Cases, folder and connections using scripts.

9.1 Exporting definitions

The export program is stored in the file directory "export": [APPARO_HOME]\FastEdit\export

Use script **afe-export.bat**

If you start the script without arguments then you can see the possible arguments:

-afeUrl <URL>	The Apparo Fast Edit URL address that will export the data. Example: http://localhost:18000/KFE. If you don't use this argument then the export is using the application server of this installation and its installation port.
-bcid <BUSINESS_CASE_ID>	ID of a Business Case you want to export.
-clientId <CLIENT_ID>	ID of a client you either want to export or an ID of a client the target object (Business Case, folder or connection) belongs to.
-dbc <CONN_NAME>	Name of a database connection you want to export.
-emailc <CONN_NAME>	Name of an email connection you want to export.
-f <FILEPATH>	Filename & path where to write the exported XML.
-folderPath <PATH>	Path of a folder you want to export. It should start with a slash character '/' which should also be used as a path separator.
-h	Displays this help text
-p <password>	The password used to authenticate. This setting is necessary in a secured environment.
-u <username>	The user used to authenticate. This setting is necessary in a secured environment.

All export activities are logged server side in file directory logs, file afeexport.log

Sample: **afe-export.bat -f \etc\definition.xml -clientId DemoClient**

9.2 Importing definitions

The import program is stored in the file directory "import": [APPARO_HOME]\FastEdit\import

Use script **afe-import.bat** (If you start the script without arguments then you see the possible arguments)

- afeUrl <URL>** The Apparo Fast Edit URL address that will export the data.
Example: http://localhost:18000/KFE.
If you don't use this argument then the export is using the application server of this installation and its installation port.
- clientId <CLIENT_ID>** ID of a client that Business Cases, language definitions, database messages or connection definitions will be imported into.
- f <FILE>** The file that contains the client, Business Case, language definition, database messages or connection definitions.
- h** Displays this help text
- importSecurity <true|false>** Business cases and folders may contain a list of user groups defining who can access them. If this option is set to false, such security information will not be imported.
- overwriteBc <true|false>** If true then Business Cases from the import file will overwrite already existing Business Cases if their Business Case ID are the same. If false, Business Cases with such conflicting identifiers will be skipped.
- overwriteClient <true|false>** If true then clients from the import file will overwrite already existing clients with the same identifiers including client content like Business Cases. If false then clients with such conflicting identifiers will be skipped.
- overwriteClientButRescueExistingConnections <true|false>**

If this parameter is used, then all connections of an existing client that is currently being re-imported (and overwritten if present) will be left unchanged. Default=false.
New connections are created.
- overwriteConnection <true|false>** If true then database and email connections from the import file will overwrite already existing connections with the same names. If false then connections with such conflicting names will be skipped.
- p <password>** The password used to authenticate. This setting is necessary in a secured environment.
- u <username>** The user used to authenticate. This setting is necessary in a secured environment.

All import activities are logged server side in file directory logs, file afeimport.log

Sample: **afe-import.bat -f \etc\definition.xml -u aferep -p aferep -clientId Sales**

10 Browser requirements

Supported browsers:

- Microsoft Edge (current version)
- Mozilla Firefox (current version)
- Google Chrome (current version)
- Apple Safari (current version)

Supported client operating systems:

- Microsoft Windows
- Android
- Apple iOS

Additional browser settings:

- Popup blocker must be **disabled**
- File download (Excel files) must be allowed

11 TLS/SSL in a Cognos environment

If the **Cognos gateway** is using **TLS/SSL** then there are **no changes necessary** in the Apparo configuration.

If the **Cognos dispatcher** is using TLS/SSL (e.g using https with port 9300) then every installed Apparo application server must be informed about the used certificate.

The certificates are stored in [APPARO_HOME]\FastEdit\OpenJDK\lib\security\cacerts

You can import your certificate with following command.

In this example Apparo is installed in "C:\Program Files\Apparo", the certificate file has the name "C:\myCertificate.crt" and the default password of the key store is "changeit".

```
"C:\Program Files\Apparo\FastEdit\OpenJDK\bin\keytool" -importcert -file C:\myCertificate.crt -alias my.company.com -keystore "C:\Program Files\Apparo\FastEdit\OpenJDK\lib\security\cacerts" -storepass changeit
```

Then open the Apparo Configuration Manager again and check if the URL for Cognos is using https:

The screenshot shows the Apparo Configuration Manager interface. At the top, there are four buttons: 'Save', 'Test Configuration', 'Start Apparo', and 'Show Application server Log'. Below these buttons is a tree view on the left with the following items: Configuration, Architecture, Application server, IBM Cognos Analytics (selected), File system paths, Web security system, eMail security system, Repository, and License key. The main area displays a table with the following data:

Name	Value
Cognos Analytics version	IBM Cognos Analytics 11
Cognos Analytics internal dispatcher URL	https://supp-ca-afe32.sad.com:9300/p2pd/servlet/dispatch
Cognos Analytics Gateway URL	/ibmcognos/bi/v1
Cognos Analytics Gateway home directory	c:\Program Files\ibm\cognos\analytics

If there are changes necessary then please update the URL and press "Start Apparo" button.

12 Support

If you need support, please write an email to:

support@apparo.solutions