

Installation Guide

Apparo Fast Edit

Multi Instance

3.1.1

Windows / Standalone version



1	<i>Prior to Installation</i>	4
1.1	Installation strategy	5
1.2	Architecture.....	6
2	<i>Preparation</i>	7
2.1	Creation of a database user for the Apparo repository	8
2.2	Defining the security group for all Apparo Administrator users	9
3	<i>Installation of all Apparo application servers</i>	10
3.1	License agreement	11
3.2	Selecting the architecture	12
3.3	Defining the target file directory	13
3.4	Carrying out the installation	14
3.5	Installation finish	14
4	<i>Configuration of all Apparo application servers</i>	15
4.1	Architecture.....	18
4.2	Application server.....	18
4.3	File system paths	19
4.4	Web security system	19
4.5	eMail security system	21
4.6	Repository	21
4.7	License key	22
5	<i>Installation of all Apparo gateways</i>	23
5.1	License agreement.....	24
5.2	Selecting the architecture	25
5.3	Defining the target file directory	26
5.4	Carrying out the installation	27
5.5	Installation finish	27
6	<i>Configuration of all Apparo gateways</i>	28
6.1	Architecture.....	31
6.2	Gateway settings	31
6.3	List of application servers.....	32
7	<i>Open the Apparo Portal</i>	33
8	<i>Open the Apparo Designer</i>	33
8.1	Installation client and languages	34
9	<i>Configuration Manager using command line</i>	39
10	<i>Import/Export definitions using command line</i>	40
10.1	Importing definitions	40

10.2	Exporting definitions.....	41
11	<i>Making own XML import files</i>	42
12	<i>Browser requirements</i>	43
12.1	Supported browsers and versions.....	43
12.2	Supported operating systems for client browsers	43
12.3	Additional settings for Microsoft Internet Explorer only.....	43
12.4	Additional settings for all browsers	44
13	<i>Support</i>	45

1 Prior to Installation

Installing Apparo Fast Edit can be done in 1 hour if you prepare your environment.

Please be aware of the following points before starting installation:

Hardware requirements

- File system about 1000 MB
- Main Memory about 1000 MB

Supported operating systems

- Windows 2016
- Windows 2012 R2
- Windows 2012
- Windows 2008 R2
- Windows 2008 (64 Bit only)

Windows Domains and Single Sign On (SSO)

If Apparo must run with **single sign on**:

The web server of the Apparo Gateway and Apparo Fast Edit must be running in the same Windows domain. All Apparo Fast Edit users must be included in the Active Directory of this domain.

Supported web servers

- MS Internet Information Server (IIS)
- Apache web server 2.4 (**64 bit only, included in setup too for MS Windows**)

Supported security systems

- LDAP
- MS Active Directory

Supported virtual environments

- VMware ESX/ESXi
- VMware Player

Apparo Fast Edit must be installed using a **Windows administrator** account.

1.1 Installation strategy

Following steps are necessary in this order:

1	Database preparation for Apparo repository Defining a security group „Apparo Administrators“
2	Installation and configuration of all Apparo application servers
3	Installation and configuration of Apparo Gateway

1.2 Architecture

Possible Apparo Fast Edit architectures:

<p>1</p>	<p>Single Instance, your existing environment is installed on <u>one computer only – that's suitable for testing too.</u></p> <p>A „Single Instance“ is useful for small environments or test systems.</p>
<p>2</p>	<p>Multi Instance, one or more Apparo gateways and one or more Apparo application servers are installed on one or more hosts.</p> <p>A „Multi Instance“ is useful for better performance and high availability.</p>

This document is describing the installation and configuration process for a Multi Instance.

2 Preparation

1	Preparation <ul style="list-style-type: none"> Analysing environment Creation of a database user for the Apparo repository Defining the security group for all users that must be able to open the Apparo environment with full access
2	Installation of all Apparo application servers
3	Configuration of all Apparo application servers Configuration using the Apparo Configuration Manager
4	Installation of the Apparo Gateway
5	Configuration Apparo Gateway Configuration the web server (if not installed) and the Apparo Gateway using the Apparo Configuration Manager
6	Installing client and languages Installing a new client and languages in Apparo Designer

2.1 Creation of a database user for the Apparo repository

Apparo Fast Edit requires a database repository. In this repository all of your definitions are stored.

Following databases are supported:

- Oracle 10g-12c
- IBM DB2 9-11.1
- MS SQL Server 2008-2016

The “internal database” is not ready for clustering – therefore don’t use this database type.

This database user must be defined before starting the Apparo Fast Edit setup.

You can find a detailed description in the document “Installation – creating database repository”.

Essential grants:

- The database user must be able to create database tables
- A login with this user must be possible.

Hints:

- **Oracle:** DB-User should have CONNECT, RESOURCE and UNLIMITED TABLESPACE grants. User **SYS** is not allowed.
- **IBM DB/2:** see document “Installation - creating database repository”

2.2 Defining the security group for all Apparo Administrator users

In order to have **full access** to the Apparo environment the user must be a member of a security group.

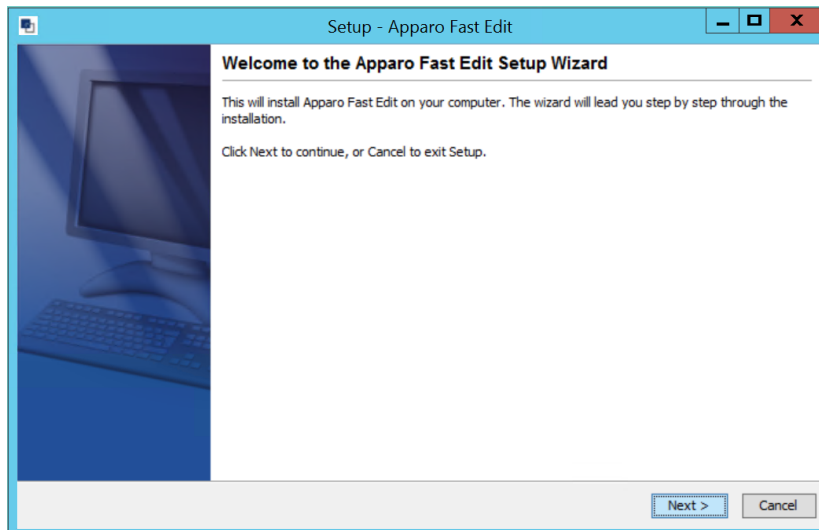
- Define a new group called **Apparo Administrators** in the used security system, for example MS Active Directory
- Add for example the Windows user **Administrator** into this group. Later this user is able to open the Apparo environment with full access only

3 Installation of all Apparo application servers

1	Preparation <ul style="list-style-type: none"> • Analysing environment • Creation of a database user for the Apparo repository • Defining the security group for all users that must be able to open the Apparo environment with full access
2	Installation of all Apparo application servers
3	Configuration of all Apparo application servers Configuration using the Apparo Configuration Manager
4	Installation of the Apparo Gateway
5	Configuration of the Apparo Gateway Configuration the web server (if not in installation included) and the Apparo Gateway using the Apparo Configuration Manager
6	Installing client and languages Installing a new client and languages in Apparo Designer

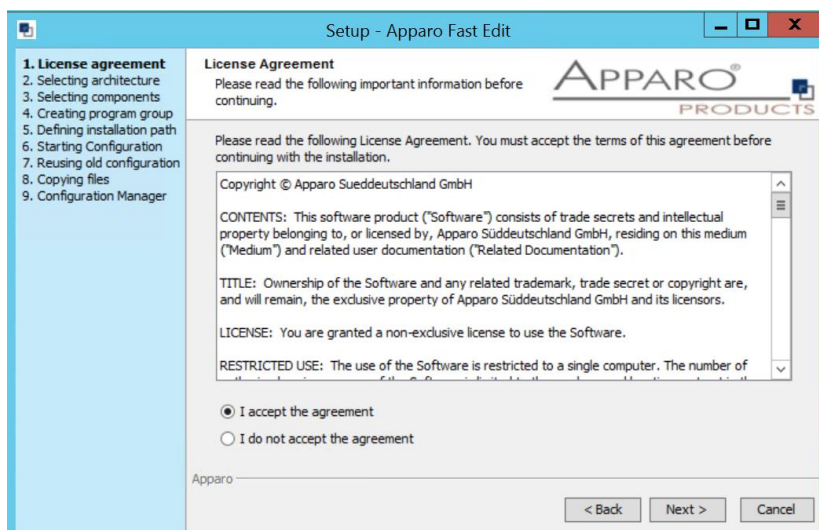
Start the Installation by execute the file

FastEdit3.1.x.yyy_winows_tomcat_standalone.exe



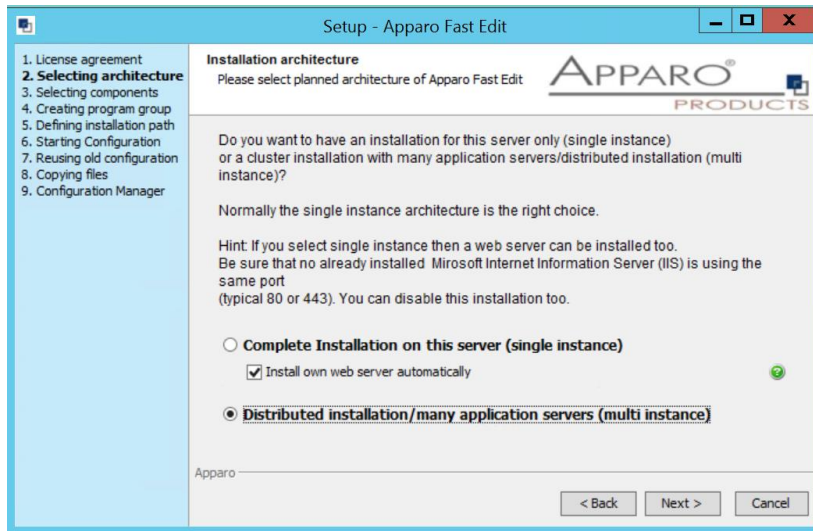
Confirm the beginning of the installation by clicking „**Next**“.

3.1 License agreement



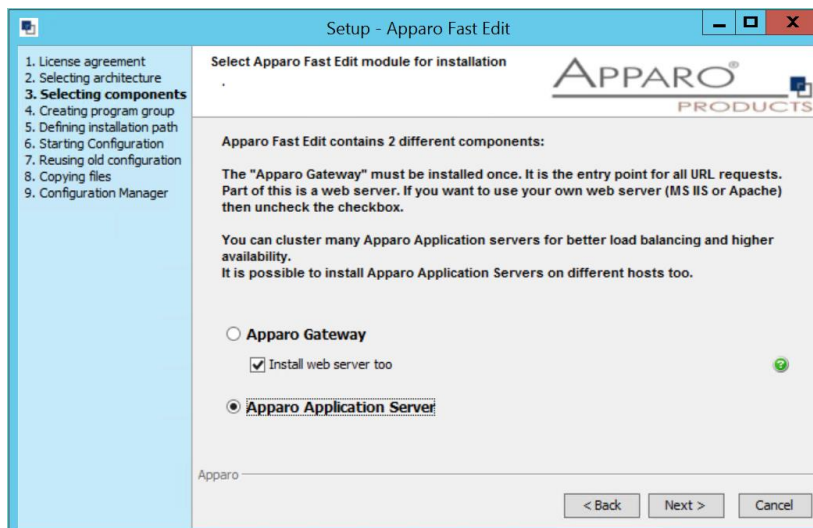
Read and confirm the license agreement by clicking „**Next**“.

3.2 Selecting the architecture



Select **“Distributed Instance”** and choose **„Next>“**.

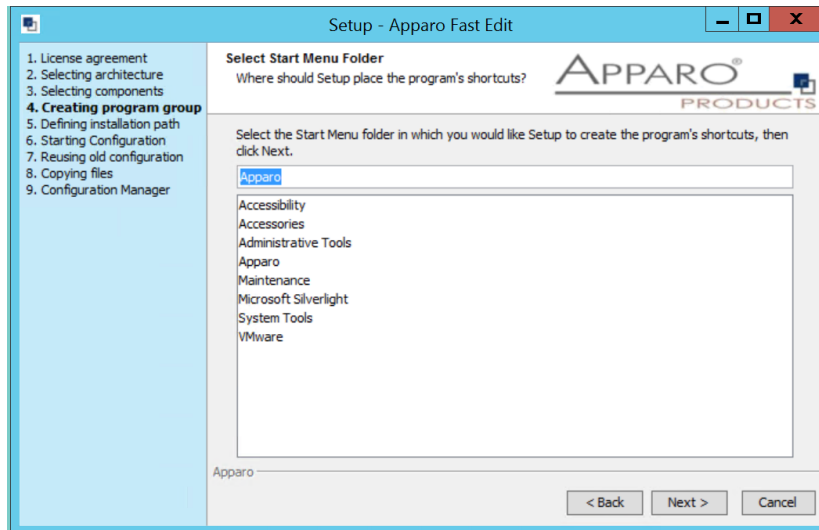
Now it's the time to choose the Apparo application server.



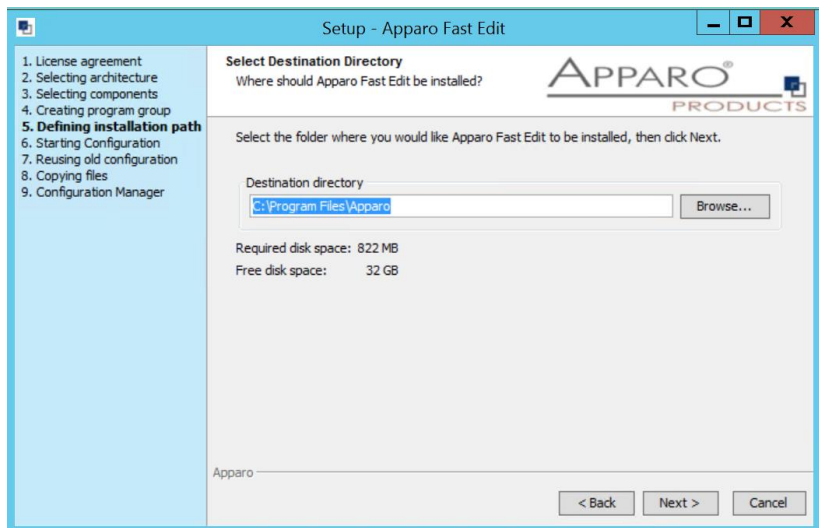
- **Apparo Gateway**
The Gateway is the entry URL point for using Apparo Fast Edit. A web server (Apache 2.4) is automatically installed if checkbox is checked.
- **Apparo Application Server**
If you want to install the Apparo Application Server

Please select **“Apparo Application Server”** and choose **„Next“**.

3.3 Defining the target file directory



Choose „Next“.



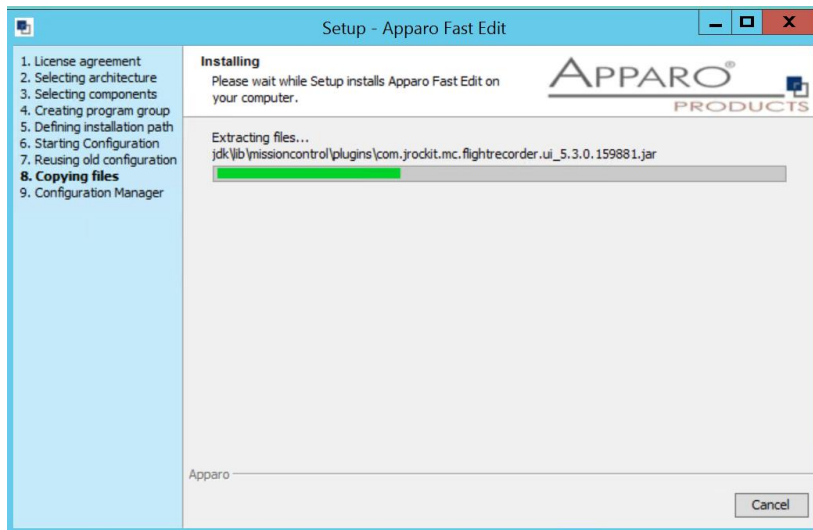
Default path is:

C:\Program Files\Apparo

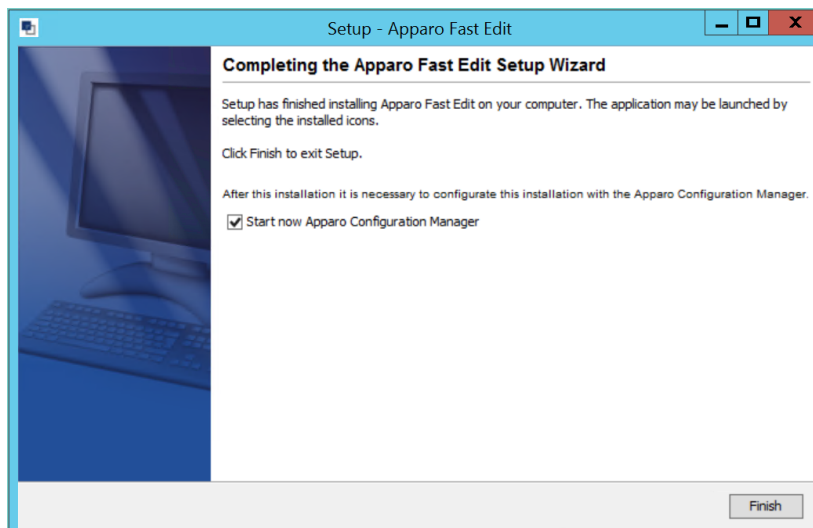
Please define the path and choose „Next“.

3.4 Carrying out the installation

Finally, the installation of Apparo Fast Edit with the selected architecture will start.
After that this installation must be configured with the **Apparo Configuration Manager**.



3.5 Installation finish



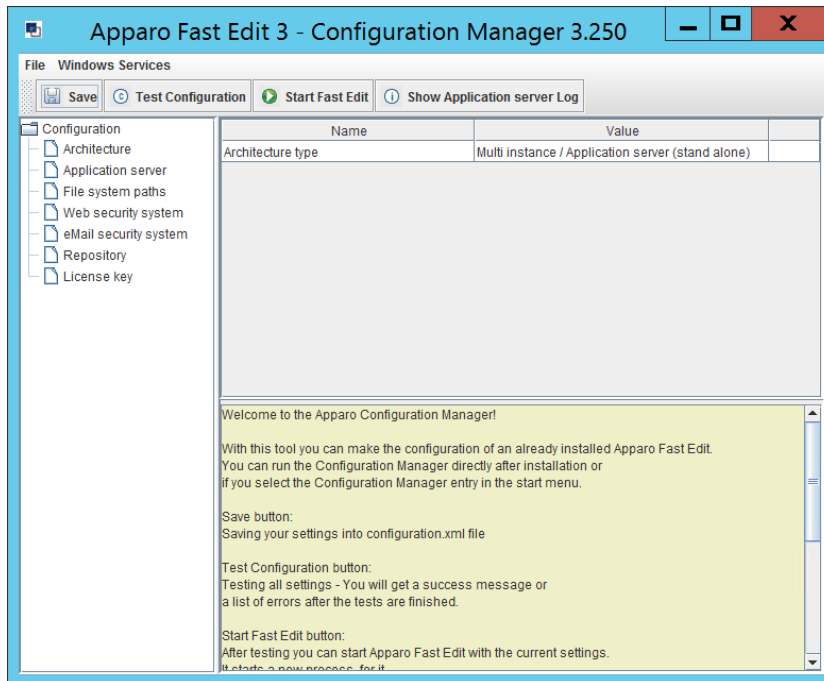
Now it's time to **configure** the installation with the **Apparo Configuration Manager**.

Click „**Finish**” for completing the installation and to start the configuration.

4 Configuration of all Apparo application servers

1	Preparation <ul style="list-style-type: none"> Analysing environment Creation of a database user for the Apparo repository Defining the security group for all users that must be able to open the Apparo environment with full access
2	Installation of all Apparo application servers
3	Configuration of all Apparo application servers Configuration using the Apparo Configuration Manager
4	Installation of the Apparo Gateway
5	Configuration of the Apparo Gateway Configuration the web server and the Apparo Gateway using the Apparo Configuration Manager
6	Installing client and languages Installing a new client and languages in Apparo Designer

With the **Apparo Configuration Manager** you are able to configure the already installed Apparo Application Server.



The settings are grouped into chapters (left side).

For each setting, you can read a helpful description text in the yellow box.

To do list:

- | | |
|----------|--|
| 1 | Define all settings |
| 2 | Press the „Test Configuration“ button for testing all settings. |
| 3 | Press the „<u>Start Fast Edit</u>“ button for starting the application server |
| 4 | <p>You can see the log file of the application server with pressing „<u>Show Log</u>“</p> <p>If the application server is running then you can see in the log:</p> <pre> 2017-11-07 02:37:41,831 INFO com . ++++++ + Apparo Fast Edit 3.1.x (Build nnn) was successfully started at 07.11.200902:37:41 + +++++</pre> |

Test of an Apparo application servers without using an Apparo gateway:

http://<applicationserver:<startport>/apparo/pages/apptest.xhtml

Example: http://appserver1:18000/apparo/pages/apptest.xhtml

With this URL you can test if the Apparo application server is running fine or has problems.

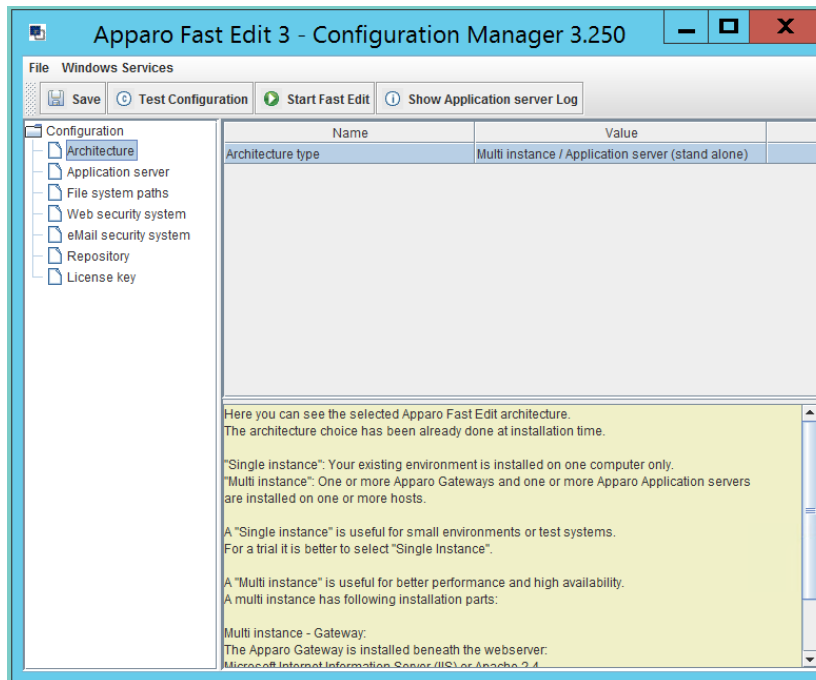
**The configuration of Apparo Fast Edit is stored in file configuration.xml
in file directory [APPARO_HOME]\FastEdit\cm .**

If you plan a parallel/cluster system then it's sometimes comfortable to copy this file into the target system.

If you open the Apparo Configuration Manager then you will see the same configuration settings like of your source system and it's possible to change it in a comfortable way.

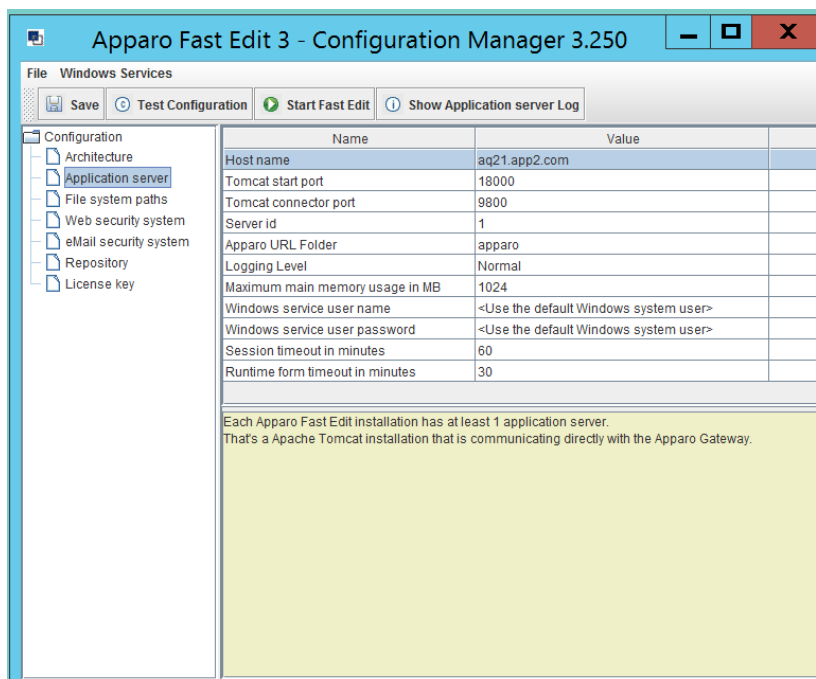
4.1 Architecture

In this section of the Configuration Manager you can find the selected Apparo Fast Edit architecture. This architecture was defined at installation time and is not changeable now.



4.2 Application server

Settings for the application server:

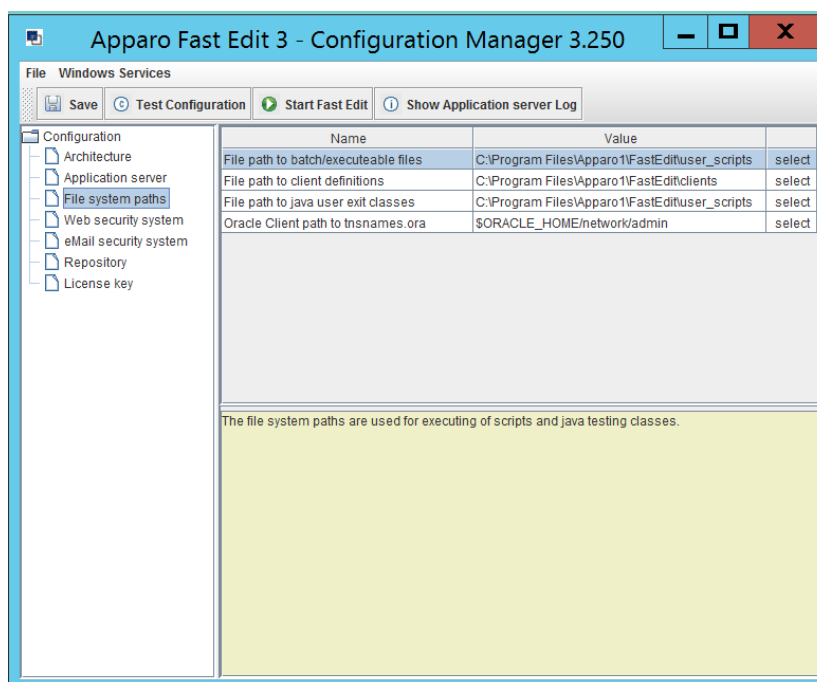


The setting **Server ID** is important in a multi-application environment. Each application server has a unique ID starting with 1, then 2,3,4...

This Server ID must be used later in the **Apparo Gateway settings** too.

4.3 File system paths

File directories for the scripts, clients and user defined Java classes:



It is important that the Windows system user or the user that is running the Windows Service of Apparo Fast Edit has write and read access to these file directories.

Hint: If you use many application servers then all application server must use the same file directory.

Therefore it's possible to use Windows shares, e.g. [\\server1\scripts](#)
If using shares it's necessary that the Windows service of Apparo Fast Edit must not use a local system account.

Using an Administrator account is for example a solution.

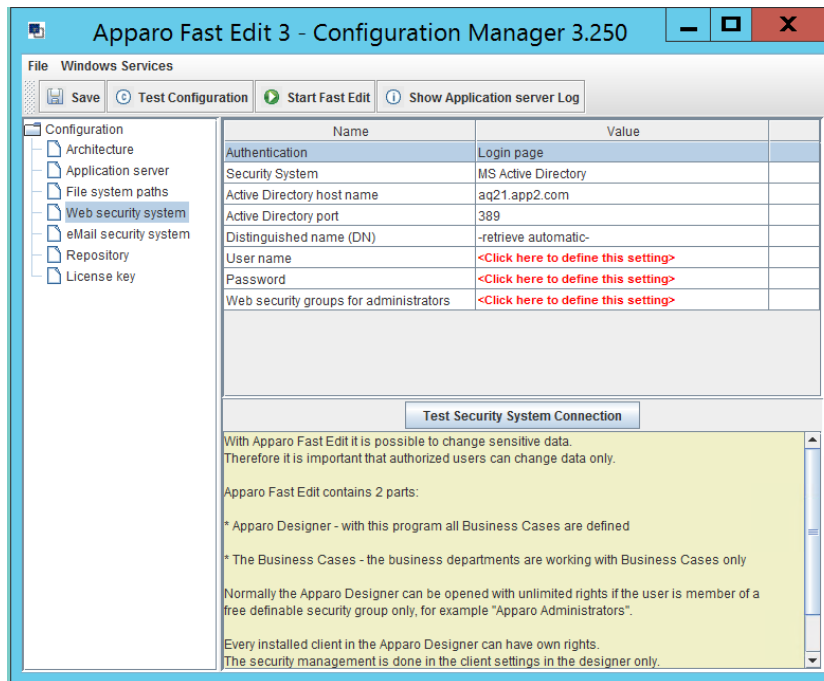
4.4 Web security system

Normally Apparo Fast Edit is integrated in a Windows domain environment. That means the MS Active Directory server knows all user logins and their groups.

To be able to use a MS Active Directory server it is necessary to define the DN, the search user (normally Administrator) and its password.

In this example the Windows domain has the name "APP2" or "app2.com"
Therefore the Distinguished name is "DC=app2, DC=com".

User name: Please use the domain name too, e.g. APP2\Administrator



Setting "Web security groups for administrators":

If a user is member of the security group that is here defined then this user has **full access** and can see and change the content of all clients in the Apparo environment.

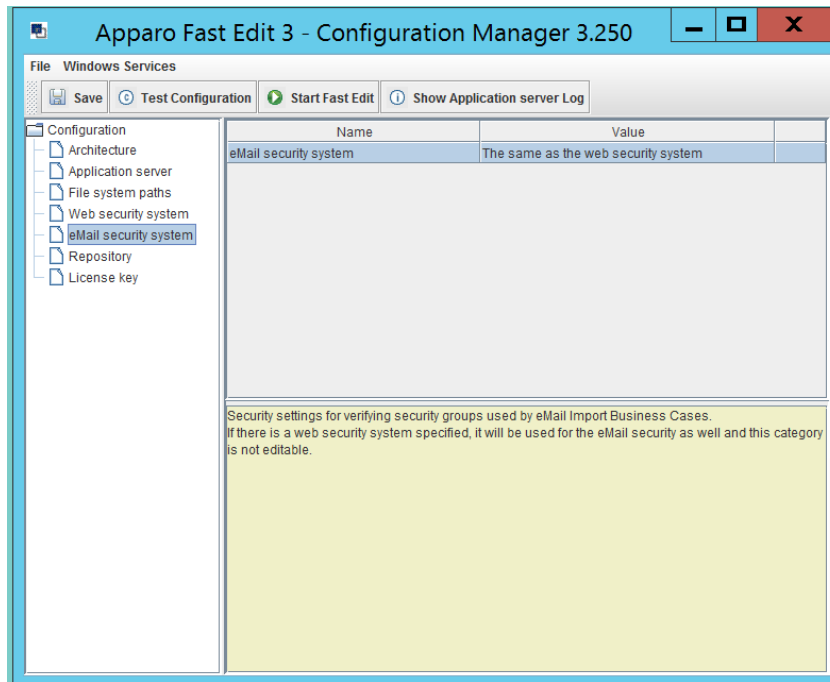
If this setting remains **empty** then everybody has **full access**.

You can input here "**Apparo Administrators**" if you have defined this group.

4.5 eMail security system

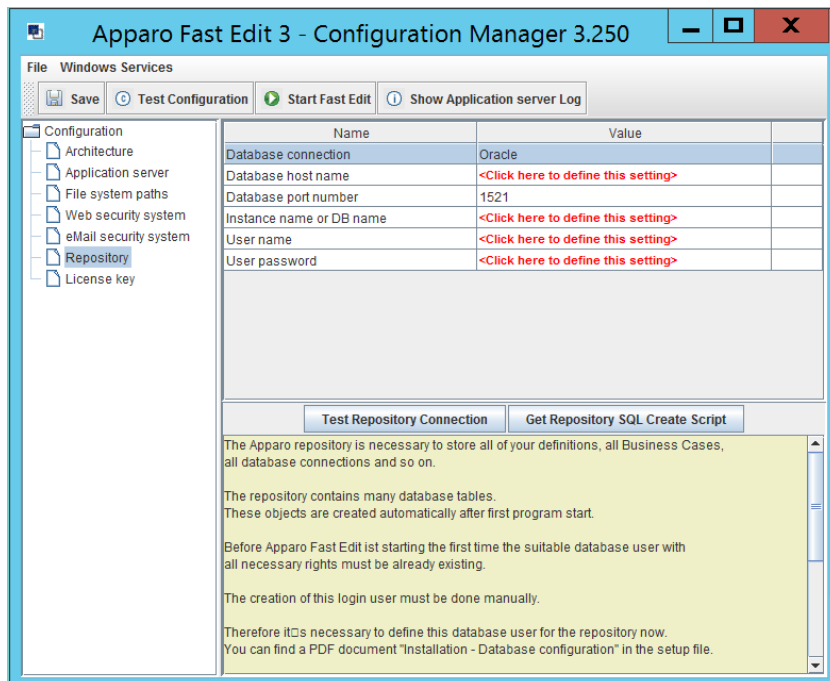
All Business Cases of type “eMail Excel import Business Case” can import data of Excel sheets that are delivered by eMail.

It is possible to define here the used security system too.



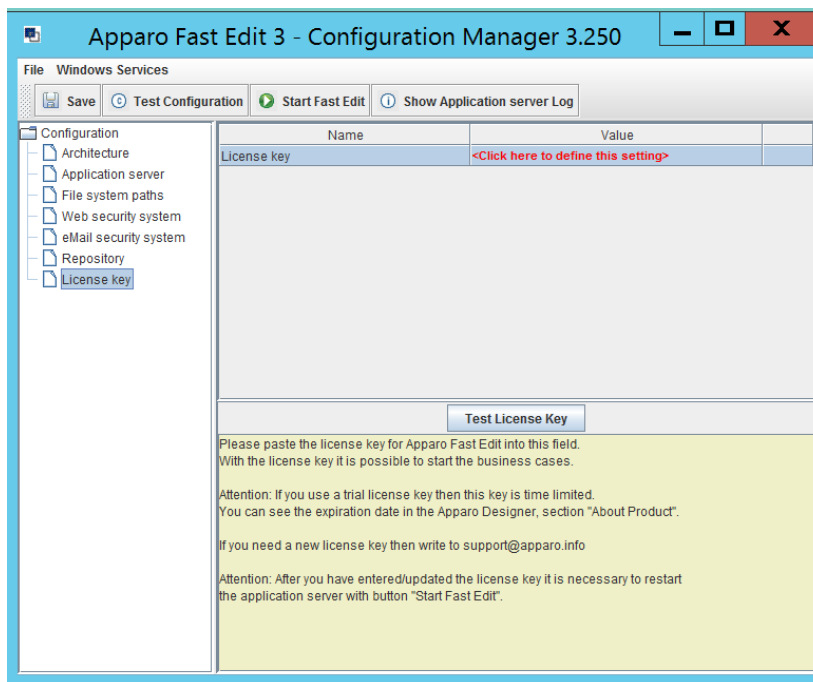
4.6 Repository

The database connection to the Apparo repository:



4.7 License key

In this section, you can add & change the license key. This key is necessary to run Apparo Fast Edit.

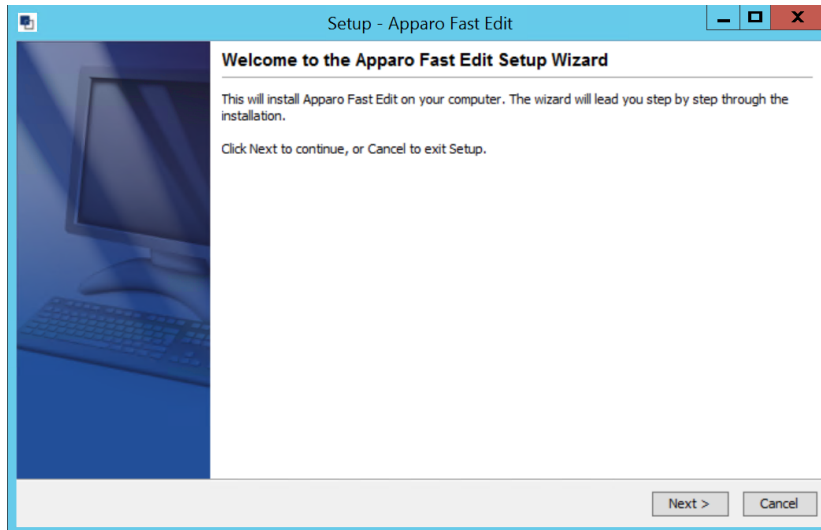


5 Installation of all Apparo gateways

1	Preparation <ul style="list-style-type: none"> Analysing environment Creation of a database user for the Apparo repository Defining the security group for all users that must be able to open the Apparo environment with full access
2	Installation of all Apparo application servers
3	Configuration of all Apparo application servers Configuration using the Apparo Configuration Manager
4	Installation of the Apparo Gateway
5	Configuration Apparo Gateway Configuration the web server (if not installed) and the Apparo Gateway using the Apparo Configuration Manager
6	Installing client and languages Installing a new client and languages in Apparo Designer

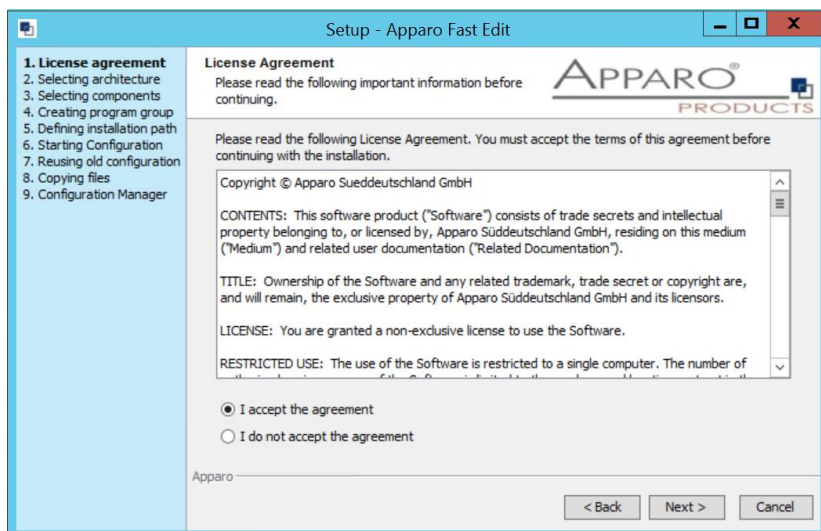
Start the installation by opening the file

FastEdit3.1.x.x.yyy_windows_tomcat_standalone.exe



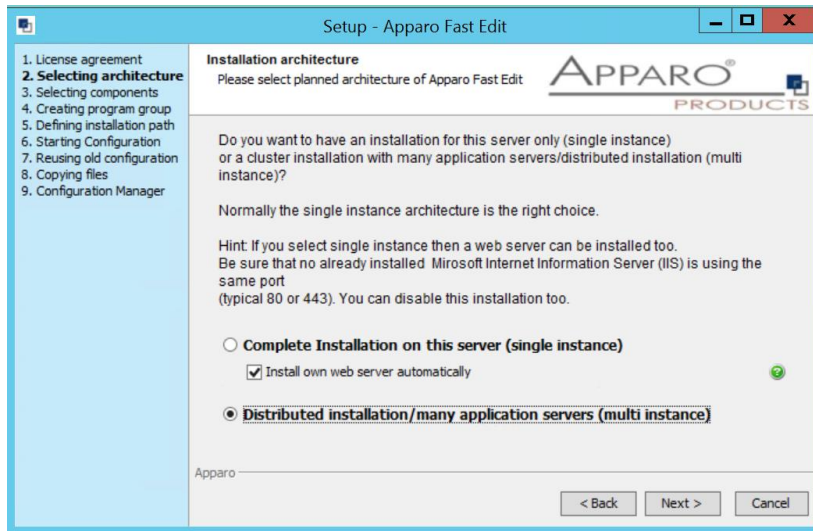
Confirm the beginning of the installation by clicking „**Next**“.

5.1 License agreement



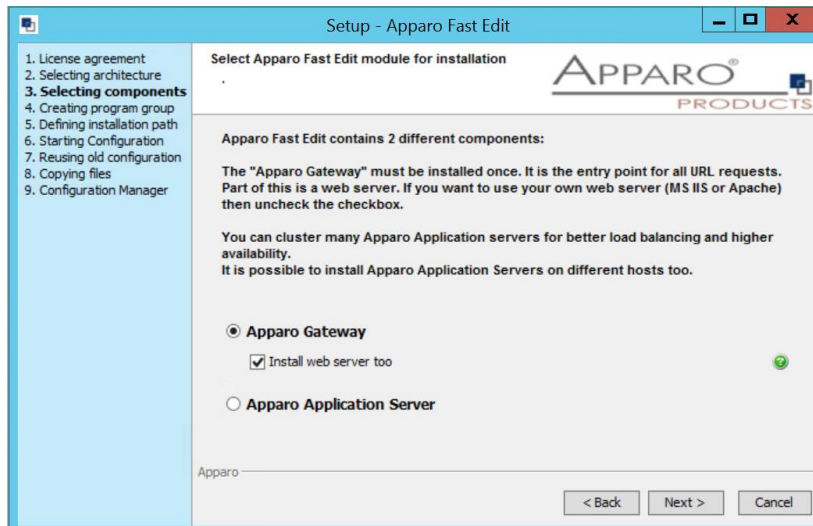
Read and confirm the license agreement by clicking „**Next**“.

5.2 Selecting the architecture



Select **“Distributed installation”** and choose **„Next“**.

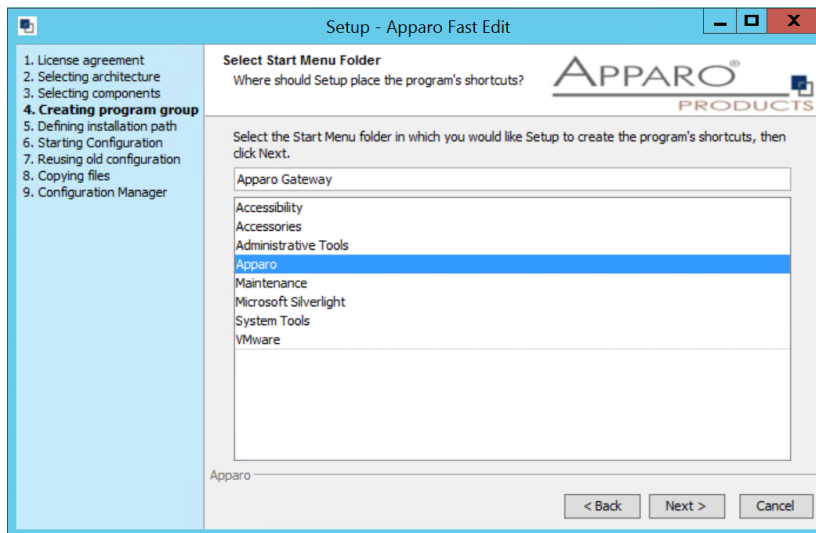
Now it's the time to choose the Apparo Gateway.



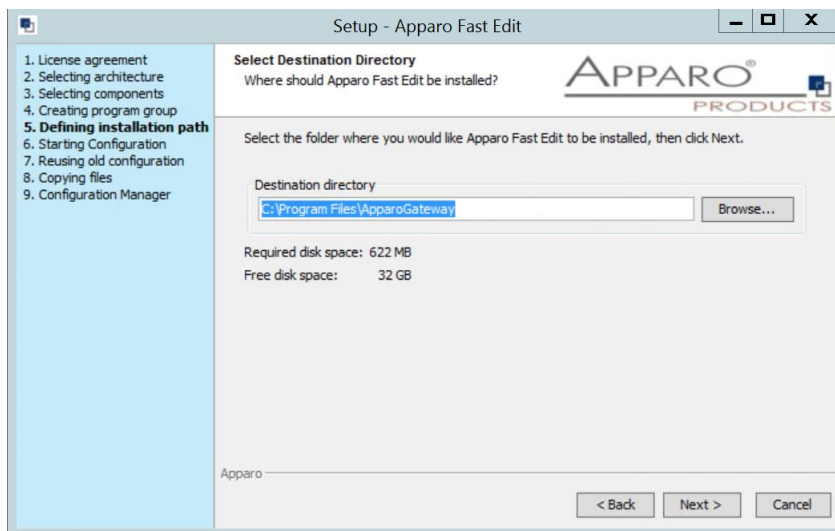
Install web server too: If checked then the setup is automatically installing Apache 2.4 too. If you want to use your own web server – for example IIS – then uncheck it.

Select **Apparo Gateway** and choose **„Next“**.

5.3 Defining the target file directory



The default name is "Apparo Gateway".



Default path:

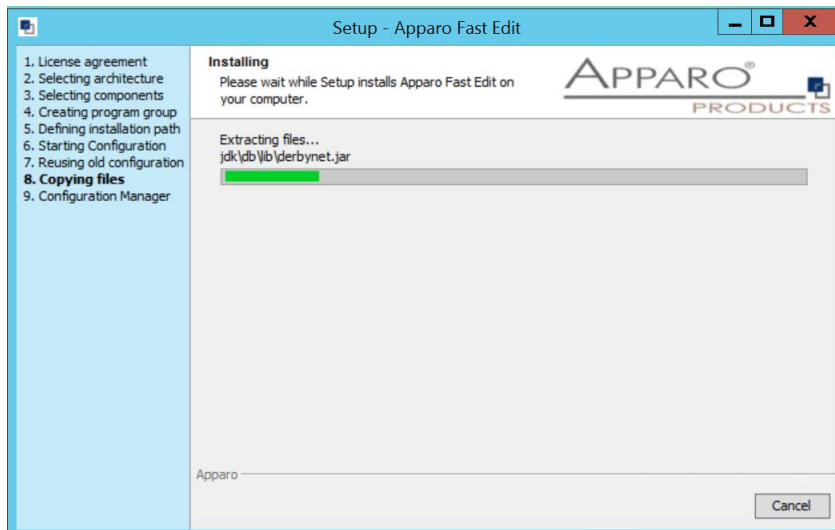
C:\Program Files\ApparoGateway

Please use for each module (Gateway, Application server) an own installation path.

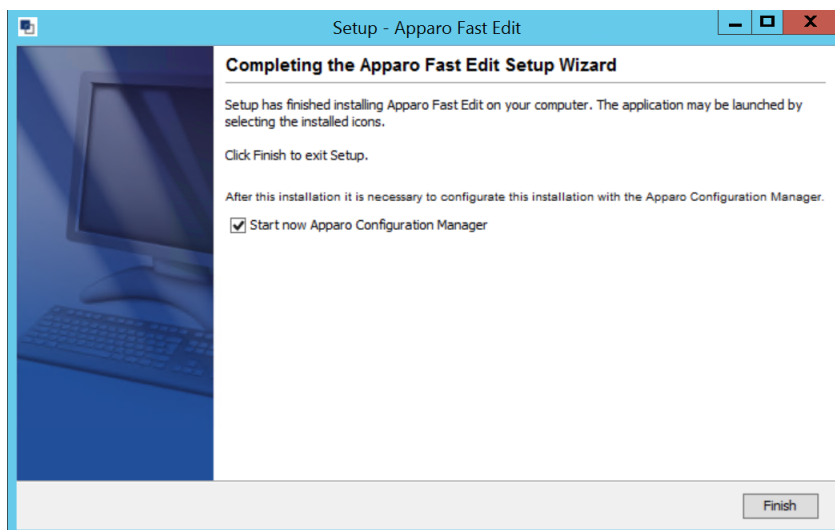
Please define the path and choose „**Next**“.

5.4 Carrying out the installation

Finally the installation of Apparo Fast Edit with the selected architecture will start.
After that this installation must be configured with the **Apparo Configuration Manager**.



5.5 Installation finish



Now it's time to **configure** the installation with the **Apparo Configuration Manager**.

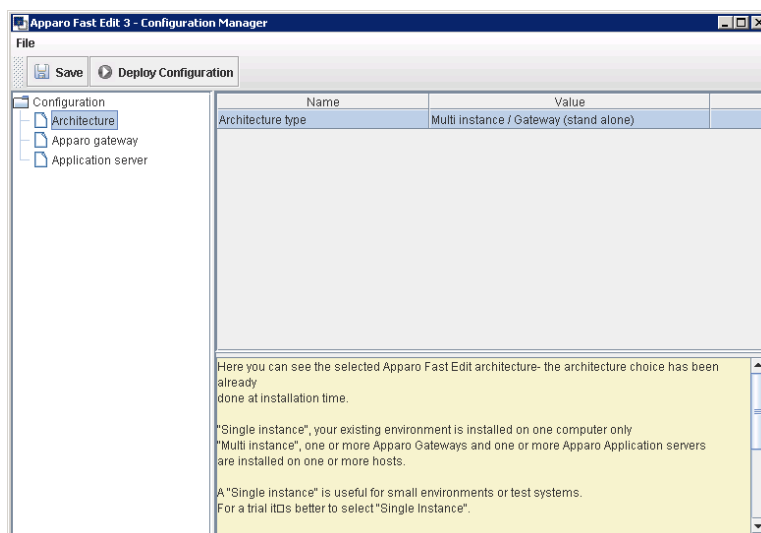
Click „**Finish**“ for completing the installation and to start the configuration.

6 Configuration of all Apparo gateways

1	Preparation <ul style="list-style-type: none"> Analysing environment Creation of a database user for the Apparo repository Defining the security group for all users that must be able to open the Apparo environment with full access
2	Installation of all Apparo application servers
3	Configuration of all Apparo Application Servers Configuration using the Apparo Configuration Manager
4	Installation of the Apparo Gateway
5	Configuration Apparo Gateway Configuration the web server (if not installed) and the Apparo Gateway using the Apparo Configuration Manager
6	Installing client and languages Installing a new client and languages in Apparo Designer

Before starting of the Apparo gateway configuration it is important that the configuration of all Apparo application servers with the Apparo Configuration Manager is successfully finished and the application servers are already running with pressing Button "Start Fast Edit".

With the **Apparo Configuration Manager** you are able to configure the already installed Apparo gateway.



The settings are grouped into chapters (left side).

For each setting you can read a helpful description text in the yellow box.

To do list:

- | | |
|----------|---|
| 1 | Define all settings |
| 2 | Press the „Deploy Configuration“ button for deploying. |
| 3 | Press the „Save“ button for storing the settings. |

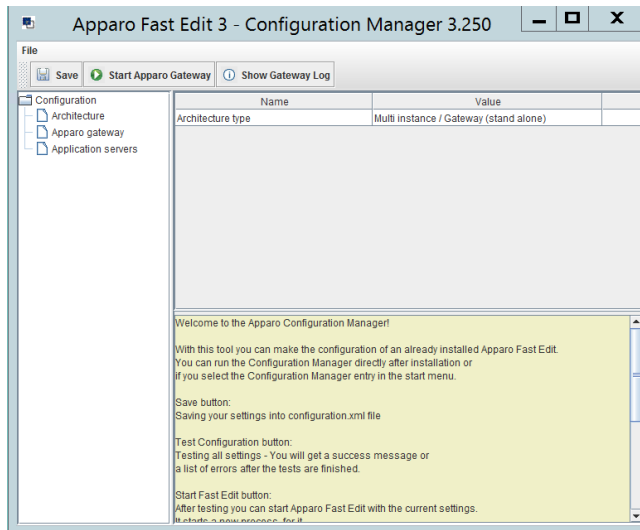
**The configuration of Apparo Fast Edit is stored in file configuration.xml
in file directory [APPARO_HOME]\FastEdit\cm**

If you plan a parallel/cluster system then it's sometimes comfortable to copy this file into the target system.

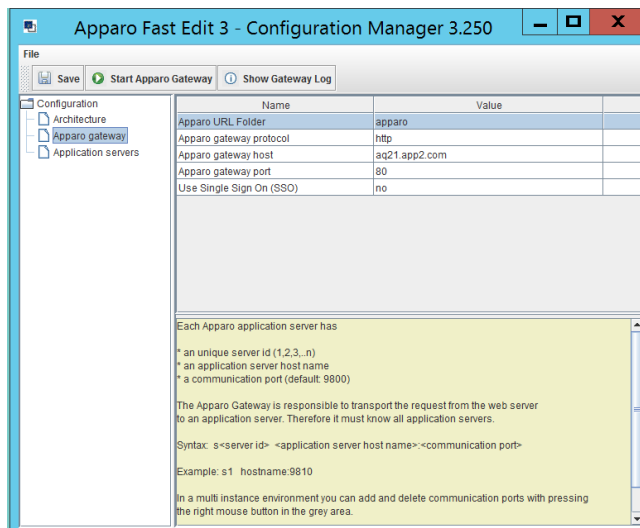
If you open the Apparo Configuration Manager then you will see the same configuration settings like of your source system and it's possible to change it in a comfortable way.

6.1 Architecture

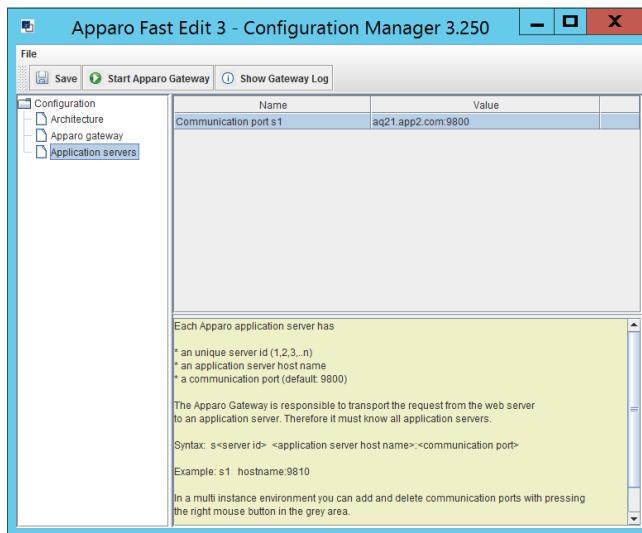
In this section of the Configuration Manager you can find the selected Apparo Fast Edit architecture. This architecture was defined at installation time and is not changeable now.



6.2 Gateway settings



6.3 List of application servers



You can add an Apparo application server entry with pressing the right mouse button.

The setting **Server ID** is important in a multi-application environment. Each application server has an unique ID starting with 1, then 2, 3, 4,...

This Server ID must be used in the **Apparo Application server settings** too.

That means: Communication port s1 is for Application Server #1

7 Open the Apparo Portal

The URL for opening the Apparo Portal:

<http://servername/apparo>

or

<http://servername>

Hint: If you have changed the folder name in the Apparo Configuration Manager then you must use this name instead of "apparo".

If you have changed the Apparo gateway protocol to https then you must use https.

Example:

<http://aqserver11/apparo>

Now try to start the Apparo Portal – just **use the link in your web browser**.

8 Open the Apparo Designer

The URL for opening the Apparo Designer:

<http://servername/apparo/designer>

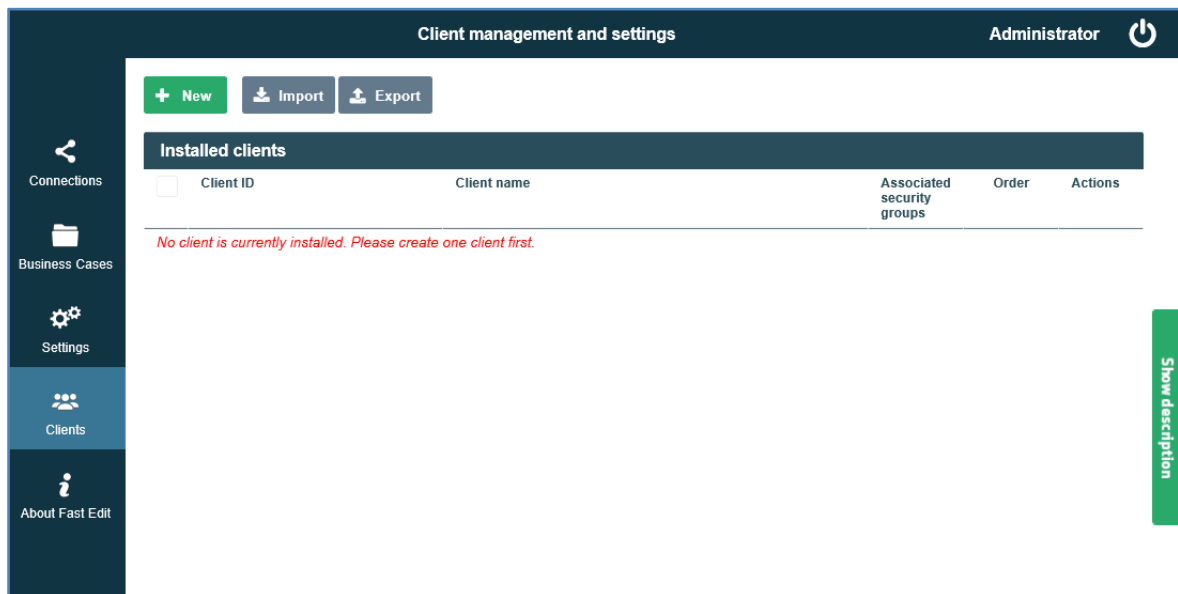
Hint: If you have changed the folder name in the Apparo Configuration Manager then you must use this name instead of "apparo".

If you have changed the Apparo gateway protocol to https then you must use https.

8.1 Installation client and languages

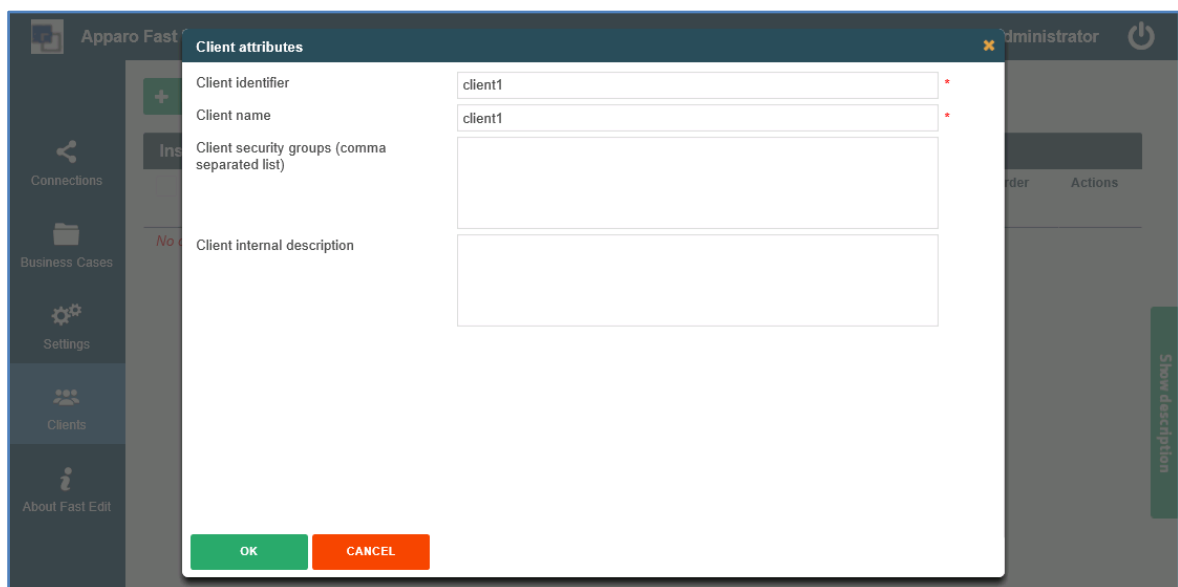
1	Preparation <ul style="list-style-type: none"> • Analysing environment • Creation of a database user for the Apparo repository • Defining the security group for all users that must be able to open the Apparo environment with full access
2	Installation of all Apparo application servers
3	Configuration of all Apparo application servers Configuration using the Apparo Configuration Manager
4	Installation of the Apparo Gateway
5	Configuration Apparo Gateway Configuration the web server (if not installed) and the Apparo Gateway using the Apparo Configuration Manager
6	Installing client and languages Installing a new client and languages in Apparo Designer

Now it is necessary to install a client and all necessary languages.



Please select “Show description” button on the right side to see descriptions for each feature.

Press the “**New**” button and create a new client.



Define a client identifier and a name and press the **OK** button.

Apparo Fast Edit Client management and settings Administrator client1 Go to Portal

+ New Import Export

Installed clients

<input type="checkbox"/>	Client ID	Client name	Associated security groups	Order	Actions
<input type="checkbox"/>	> client1	> client1		↓ ↑	✕

Connections
Business Cases
Settings
Clients
About Fast Edit

Show description

Now select the client (here: client1) to get the properties of the client:

Apparo Fast Edit Settings of client client1 Administrator client1

Client head General Languages Default numeric & datetime formats Access rights Automatic table/column creation

Excel export formats Business Log Portal Colours of portal and designer Business case standard style

Client identifier client1

Client name client1

Client security groups (comma separated list)

Client internal description

OK CANCEL

Show description

In tab “Languages” you can load all necessary languages for this client:

Apparo Fast Edit Settings of client client1 Administrator client1

Client head General **Languages** Default numeric & datetime formats Access rights Automatic table/column creation

Excel export formats Business Log Portal Colours of portal and designer Business case standard style

The language was imported successfully.

Warning: If you delete a language then all text entries of this language for all existing Business Case of this client will be deleted too. For example header texts, widget labels and button labels.

Code	Language	Actions
en	English	X ↗

Import language Browse...

IMPORT

OK CANCEL

Show description

You will find the language files in [Apparo-Home]/Fast Edit /languages
Please select the right language and press the IMPORT button.

In tab “Access rights” you can define all **security groups for different features**.

These settings are optional.

Apparo Fast Edit Settings of client client1 Administrator client1

Client head General Languages Default numeric & datetime formats **Access rights** Automatic table/column creation

Excel export formats Business Log Portal Colours of portal and designer Business case standard style

Define restrictions for accessing secured parts of Apparo Fast Edit. Only users with listed security groups will be able to access that particular functions.
If no access rights are defined, that means access to function is unrestricted.

Apparo Client Administrator: has unrestricted access to all features of this client

Apparo Connection Administrator: can create, edit and delete database and email server connections

Apparo Designer: manages Business Cases - can create, delete and edit Business Cases and folders

Apparo Import & Export Administrator: can import and export Business Cases and connections

Apparo Portal Administrator: can import, export and edit all portal entries of this client

Enter comma separated list of security groups for each Apparo Fast Edit role:

Apparo Client Administrator

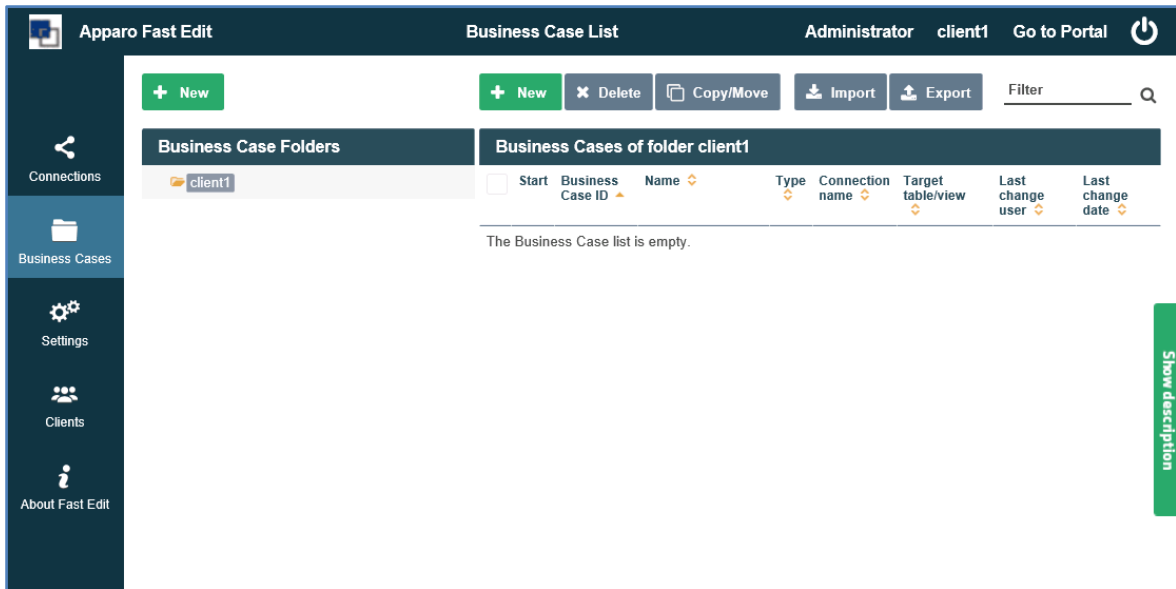
Apparo Connection Administrator

Apparo Designer

Show description

After that please press the OK for leaving the client settings.

Now you can press the “Business Cases” Icon on the left side and you see the entry page for this client:



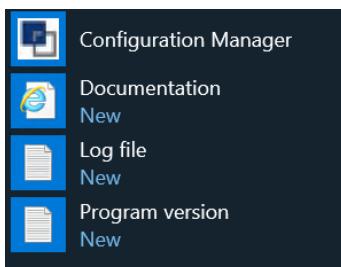
The installation & configuration on serverside is now successfully completed.

Please also read the following chapter ‘Browser requirements’.

We recommend to read the document “**Training Guide**” for the fundamental usage for the first steps.

You can find all documentations and movies in

Windows Start (left corner) / Apparo / Documentation



Movies about Apparo Fast Edit:

<http://movies.apparo.solutions>

9 Configuration Manager using command line

It is possible to automate the configuration process of the Configuration Manager.

The complete configuration is stored in the file **configuration.xml**

You can find this file in the [APPARO_HOME]/FastEdit/cm file directory.

Using this command line the configuration can be restored:

```
[APPARO_HOME]/FastEdit/cm/cmc.sh parameter1 parameter2 ...
```

Parameter name	Functionality
-?,--help	Displays this help text
-deploy true/false	Configuration Manager will deploy the setting files
-start true/false	Start Apparo Fast Edit (if no gateway)

10 Import/Export definitions using command line

You can export and import clients (including languages, folder, Business Cases, connections, DB-messages), Business Cases, folder and connections using command scripts.

10.1 Importing definitions

The import program is stored in the file directory "import": [APPARO_HOME]\FastEdit\import

Use script **afe-import.bat** (If you start the script without arguments then you see the possible arguments)

-afeUrl <URL>	The Apparo Fast Edit URL address that will export the data. Example: http://localhost:18000/KFE. If you don't use this argument then the export is using the application server of this installation and its installation port.
-clientId <CLIENT_ID>	ID of a client that Business Cases, language definitions, database messages or connection definitions will be imported into.
-f <FILE>	The file that contains the client, Business Case, language definition, database messages or connection definitions.
-h	Displays this help text
-importSecurity <true false>	Business cases and folders may contain a list of user groups defining who can access them. If this option is set to false, such security information will not be imported.
-overwriteBc <true false>	If true then Business Cases from the import file will overwrite already existing Business Cases if their Business Case ID are the same. If false, Business Cases with such conflicting identifiers will be skipped.
-overwriteClient <true false>	If true then clients from the import file will overwrite already existing clients with the same identifiers including client content like Business Cases. If false then clients with such conflicting identifiers will be skipped.
-overwriteConnection <true false>	If true then database and email connections from the import file will overwrite already existing connections with the same names. If false then connections with such conflicting names will be skipped.
-p <PASSWORD>	The password used to authenticate. This setting is necessary in a secured environment.
-u <USERNAME>	The user used to authenticate. This setting is necessary in a secured environment.

All import activities are logged server side in file directory logs, file afeimport.log

Sample: **afe-import.bat -f \etc\definition.xml -u aferep -p aferep -clientId Sales**

10.2 Exporting definitions

The export program is stored in the file directory "export": [APPARO_HOME]\FastEdit\export

Use script **afe-export.bat**

If you start the script without arguments then you can see the possible arguments:

-afeUrl <URL>	The Apparo Fast Edit URL address that will export the data. Example: http://localhost:18000/KFE. If you don't use this argument then the export is using the application server of this installation and its installation port.
-bcid <BUSINESS_CASE_ID>	ID of a Business Case you want to export.
-clientId <CLIENT_ID>	ID of a client you either want to export or an ID of a client the target object (Business Case, folder or connection) belongs to.
-dbc <CONN_NAME>	Name of a database connection you want to export.
-emailc <CONN_NAME>	Name of an email connection you want to export.
-f <FILEPATH>	Filename & path where to write the exported XML.
-folderPath <PATH>	Path of a folder you want to export. It should start with a slash character '/' which should also be used as a path separator.
-h	Displays this help text
-p <PASSWORD>	The password used to authenticate. This setting is necessary in a secured environment.
-u <USERNAME>	The user used to authenticate. This setting is necessary in a secured environment.

All export activities are logged server side in file directory logs, file afeexport.log

Sample: **afe-export.bat -f \etc\definition.xml -clientId DemoClient**

11 Making own XML import files

You can import database connection and email connection definitions using own xml files.

These files have encrypted settings – like database name.

If you want to write your own xml files then you must change following XML-setting first:

Set

```
<encryptedXmlData>true</encryptedXmlData>
```

To

```
<encryptedXmlData>false</encryptedXmlData>
```

Example:

1. Define own database connection in Apparo Designer
2. Export this connection into a xml file
3. Now you can see the expected xml structure
4. Please change the encryptedXMLData tag

12 Browser requirements

12.1 Supported browsers and versions

Microsoft Internet Explorer 10
Microsoft Internet Explorer 11

Hint: Compatibility mode must be disabled.

Mozilla Firefox (current version)
Google Chrome (current version)
Apple Safari (current version)

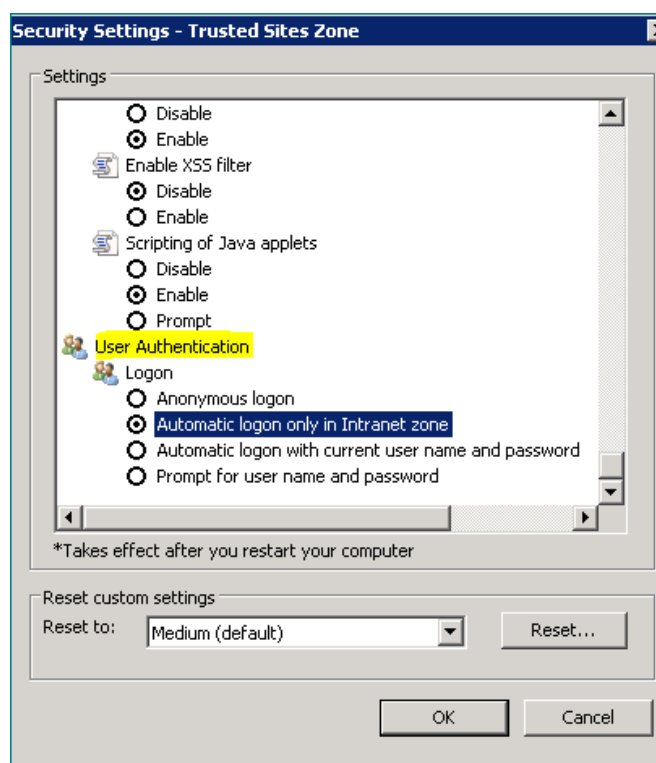
12.2 Supported operating systems for client browsers

Microsoft Windows
Apple iOS
Android

12.3 Additional settings for Microsoft Internet Explorer only

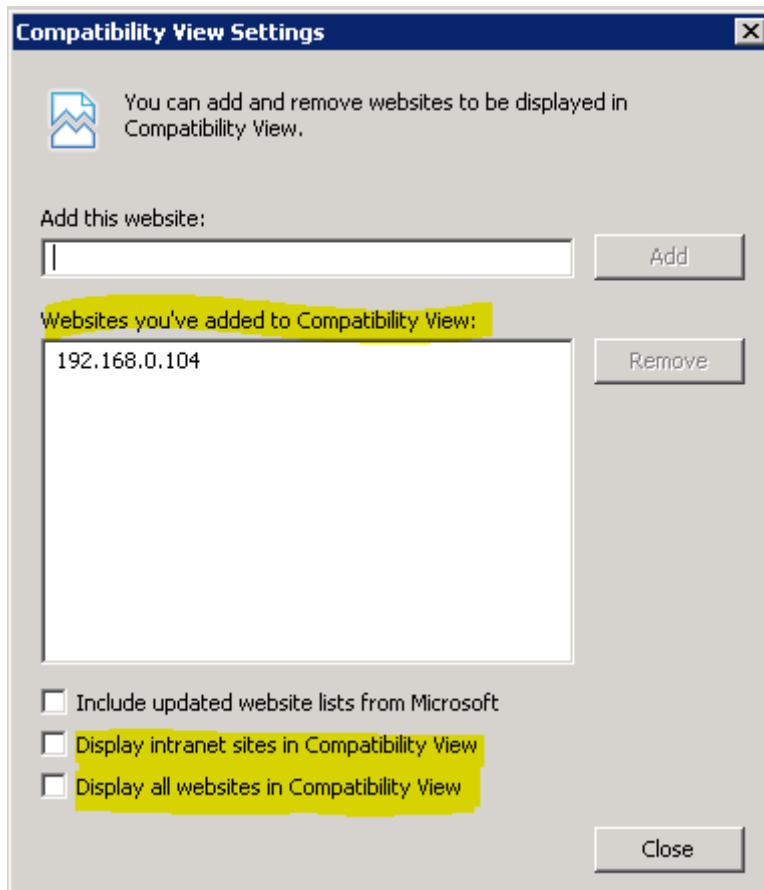
- Domain name of Apparo Fast Edit web server must be in trusted sites
- “about:blank” must be in trusted sites

Settings for Single Sign On (SSO) for Apparo Fast Edit:



Hint: Apparo Fast Edit is not supporting Internet Explorer 7.

Therefore, the settings “**Display intranet in Compatibility View**” and “**Display all websites in Compatibility View**” must be disabled.



Solution: Placing these domains into the “Websites you’ve added to Compatibility View” because in this case Apparo Fast Edit can disable the Compatibility View automatically.

12.4 Additional settings for all browsers

- Popup blocker must be **disabled**
- File download (Excel files) must be allowed

13 Support

If you need support please write an email to:

support@apparo.solutions